

Product datasheet for CS608850

Frozen Tissue Sections, Muscle tissue

Product data:

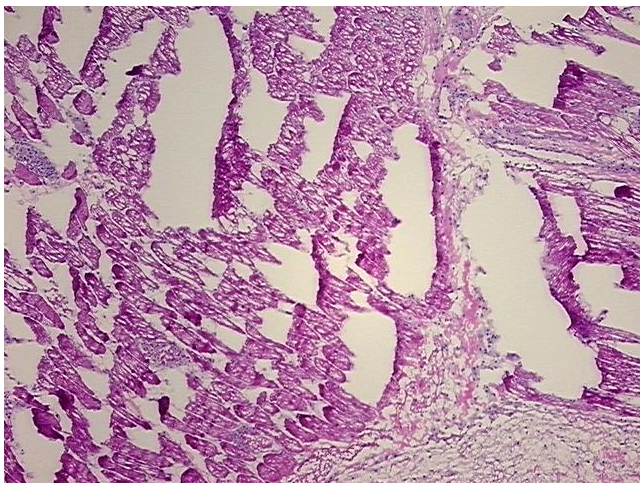
Product Type:	Frozen Sections
Disease State:	Other Disease
Diagnosis Category:	Inflammation (various)
Tissue:	Muscle tissue
Frozen Sample ID:	FR000047C6
Case ID:	CU0000001422
Tissue of Origin:	Muscle tissue
Site of Finding:	Muscle tissue
Appearance:	L
Sample Diagnosis (from Pathology Verification):	Cellulitis
Normal:	0%
Lesional:	100%
Tumor:	0%
Tumor Hypo/Acellular Stroma:	0%
Tumor Hypercellular Stroma:	0%
Necrosis:	0%
Pathology Verification notes from H&E review:	75% skeletal muscle, 25% interstitial tissue containing moderate plasma cell infiltrate (estimated at 5%)
CASE Diagnosis (from medical center path report):	Atherosclerosis
Age:	31
Gender:	Female
Storage:	Store frozen tissue sections at -80°C.



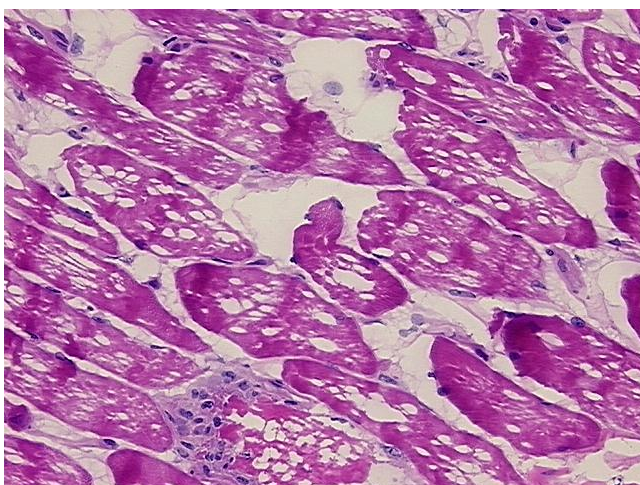
[View online »](#)

Stability: All frozen tissue sections are stable for 1 year from date of purchase if stored at -80°C without repeated freeze/thaws.

Product images:



4x Image



20x Image