

## Product datasheet for CS608099

### Frozen Tissue Sections, Kidney

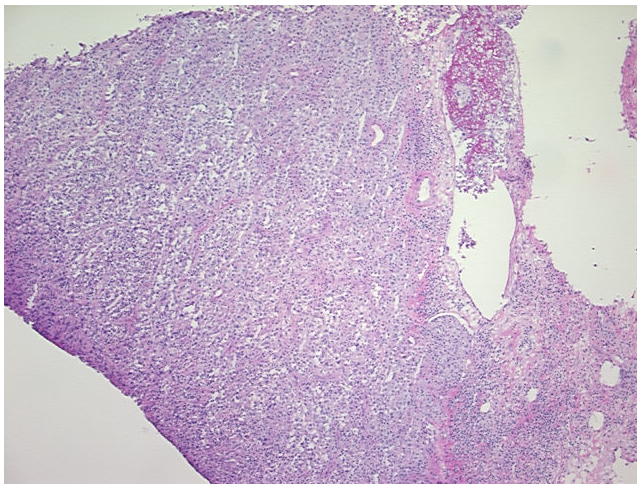
#### Product data:

|   |   |
|---|---|
| Product Type:                                     | Frozen Sections   |
| Disease State:                                    | Cancer  |
| Diagnosis Category:                               | Renal Cell Carcinoma  |
| Tissue:   | Kidney  |
| Frozen Sample ID:                                 | FR00004186  |
| Case ID:  | CU00000001303   |
| Tissue of Origin:                                 | Kidney  |
| Site of Finding:                                  | Kidney  |
| Appearance:                                       | T   |
| Sample Diagnosis (from Pathology Verification):   | Carcinoma of kidney, renal cell, papillary, rhabdoid features |
| Normal:   | 0%  |
| Lesional:   | 40%   |
| Tumor:  | 50%   |
| Tumor Hypo/Acellular Stroma:                      | 0%  |
| Tumor Hypercellular Stroma:                       | 10%   |
| Necrosis:   | 0%  |
| Pathology Verification notes from H&E review:     | lesion: capsule with chronic inflammation                     |
| CASE Diagnosis (from medical center path report): | Carcinoma of kidney, renal cell, papillary, rhabdoid features |
| Age:  | 56  |
| Gender:   | Male  |
| Tumor Grade:                                      | Fuhrman G4: Nuclei bizarre and multilobated                   |

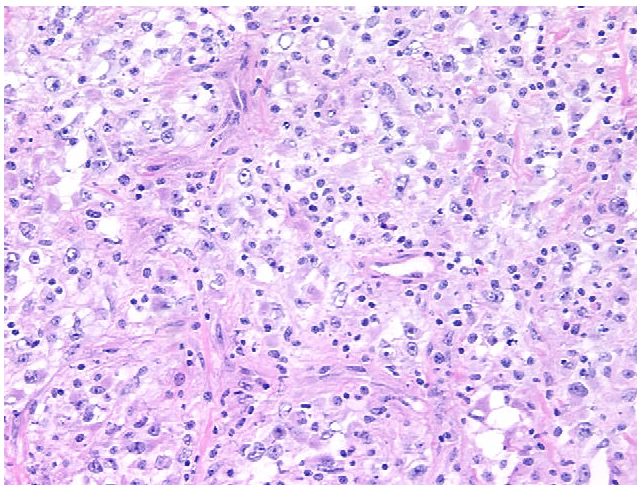

[View online »](#)

|                              |  |
|------------------------------|--|
| Minimum Stage Grouping:      | IV   |
| T (Extent of Primary Tumor): | T3a  |
| N (Lymph node metastasis):   | N1   |
| M (Distant metastasis):      | M1   |
| Storage:                     | Store frozen tissue sections at -80°C.   |
| Stability:                   | All frozen tissue sections are stable for 1 year from date of purchase if stored at -80°C without repeated freeze/thaws. |

## Product images:



4x Image



20x Image