

Product datasheet for **CS607997**

Frozen Tissue Sections, Soft tissue

Product data:

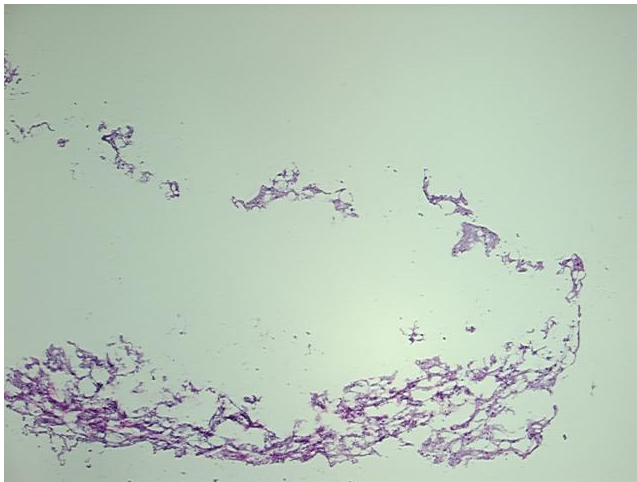
Product Type:	Frozen Sections
Disease State:	Other Disease
Diagnosis Category:	Benign Tumors
Tissue:	Adipose tissue
Frozen Sample ID:	FR0000409E
Case ID:	CU0000001292
Tissue of Origin:	Soft tissue
Site of Finding:	Retroperitoneal region
Appearance:	T
Sample Diagnosis (from Pathology Verification):	Angiomyolipoma of retroperitoneum
Normal:	0%
Lesional:	0%
Tumor:	95%
Tumor Hypo/Acellular Stroma:	0%
Tumor Hypercellular Stroma:	5%
Necrosis:	0%
Pathology Verification notes from H&E review:	Lipomatous component predominant
CASE Diagnosis (from medical center path report):	Angiomyolipoma of retroperitoneum
Age:	47
Gender:	Female
Tumor Grade:	Not Reported



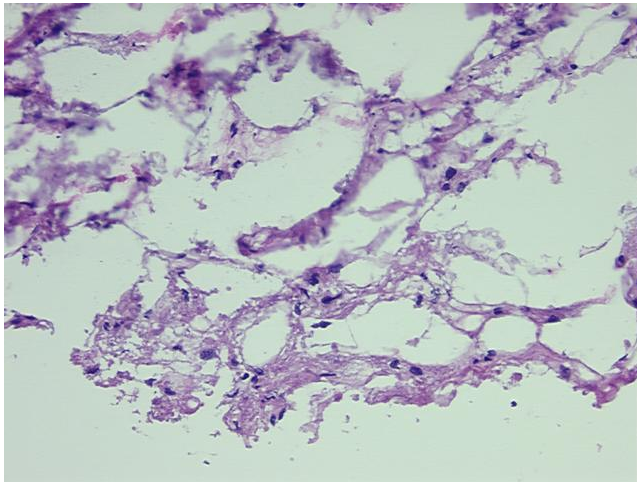
[View online »](#)

Minimum Stage Grouping:	Not Reported
T (Extent of Primary Tumor):	Not Reported
N (Lymph node metastasis):	Not Reported
M (Distant metastasis):	Not Reported
Diagnostic Test Results:	MART-1 ~ Melanoma Marker ~ Melan-A,Positive; Vimentin ~ VIM ! by IHC,Positive; HMB45 melanoma antigen ~ GP100 ! by IHC,Positive; MSA ~ Muscle Specific Actin,Positive
Storage:	Store frozen tissue sections at -80°C.
Stability:	All frozen tissue sections are stable for 1 year from date of purchase if stored at -80°C without repeated freeze/thaws.

Product images:



4x Image



20x Image