

Product datasheet for **CS607860**

Frozen Tissue Sections, Heart

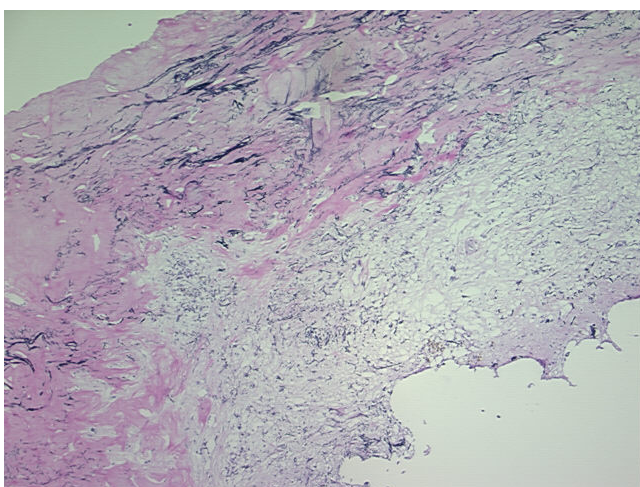
Product data:

Product Type:	Frozen Sections
Disease State:	Other Disease
Diagnosis Category:	Benign Tumors
Tissue:	Heart
Frozen Sample ID:	FR00005230
Case ID:	CU0000001277
Tissue of Origin:	Heart
Site of Finding:	Heart
Appearance:	T
Sample Diagnosis (from Pathology Verification):	Myxoma, cardiac
Normal:	0%
Lesional:	0%
Tumor:	25%
Tumor Hypo/Acellular Stroma:	75%
Tumor Hypercellular Stroma:	0%
Necrosis:	0%
Pathology Verification notes from H&E review:	Very hypocellular myxoid tumor with surrounding fibrosis
CASE Diagnosis (from medical center path report):	Myxoma, cardiac
Age:	61
Gender:	Male
Tumor Grade:	Not Reported

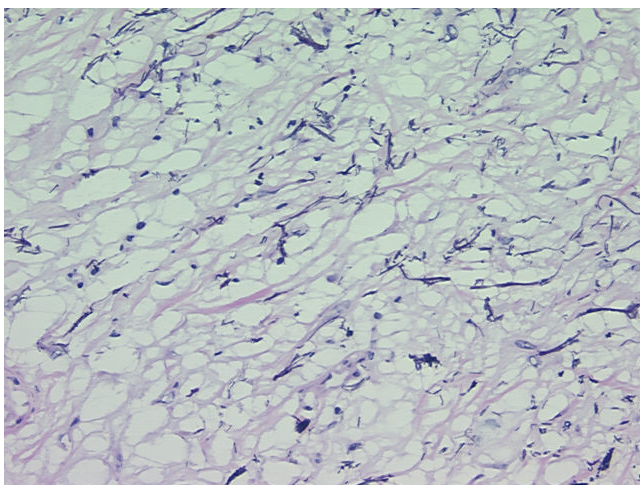


[View online »](#)

Minimum Stage Grouping:	Not Reported
T (Extent of Primary Tumor):	Not Reported
N (Lymph node metastasis):	Not Reported
M (Distant metastasis):	Not Reported
Storage:	Store frozen tissue sections at -80°C.
Stability:	All frozen tissue sections are stable for 1 year from date of purchase if stored at -80°C without repeated freeze/thaws.

Product images:

4x Image



20x Image