

## Product datasheet for **CS607736**

### Frozen Tissue Sections, Skin

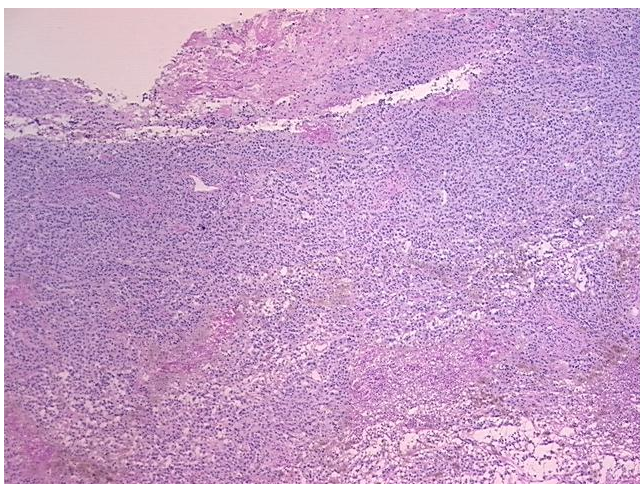
#### Product data:

|   |                                |
|---|--------------------------------|
| Product Type:                                     | Frozen Sections                |
| Disease State:                                    | Cancer                         |
| Diagnosis Category:                               | Melanoma                       |
| Tissue:   | Skin                           |
| Frozen Sample ID:                                 | FR000050C8                     |
| Case ID:  | CU0000001257                   |
| Tissue of Origin:                                 | Skin                           |
| Site of Finding:                                  | Lymph node                     |
| Appearance:                                       | T                              |
| Sample Diagnosis (from Pathology Verification):   | Malignant melanoma, metastatic |
| Normal:   | 0%                             |
| Lesional:   | 0%                             |
| Tumor:  | 45%                            |
| Tumor Hypo/Acellular Stroma:                      | 5%                             |
| Tumor Hypercellular Stroma:                       | 0%                             |
| Necrosis:   | 50%                            |
| Pathology Verification notes from H&E review:     | tumor stroma: 100% fibrosis    |
| CASE Diagnosis (from medical center path report): | Malignant melanoma, metastatic |
| Age:  | 66                             |
| Gender:   | Female                         |
| Tumor Grade:                                      | Not Reported                   |

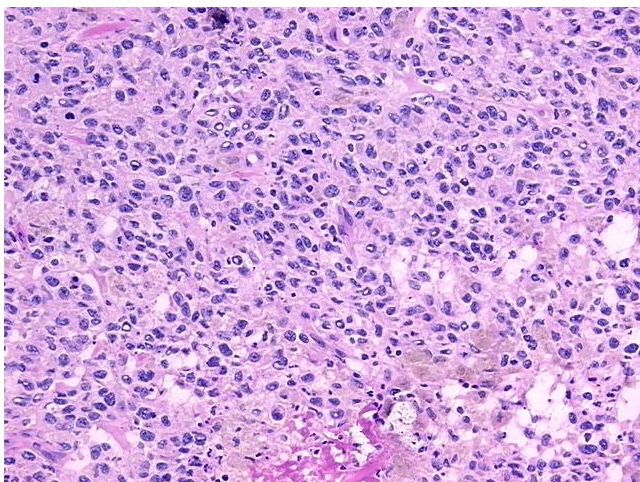


[View online »](#)

|                              |  |
|------------------------------|--|
| Minimum Stage Grouping:      | IIIC   |
| T (Extent of Primary Tumor): | TX   |
| N (Lymph node metastasis):   | N3   |
| M (Distant metastasis):      | MX   |
| Diagnostic Test Results:     | HMB45 melanoma antigen ~ GP100 ! by IHC,Positive; S100 protein,Positive  |
| Storage:                     | Store frozen tissue sections at -80°C.   |
| Stability:                   | All frozen tissue sections are stable for 1 year from date of purchase if stored at -80°C without repeated freeze/thaws. |

**Product images:**

4x Image



20x Image