

## Product datasheet for **CS607648**

### Frozen Tissue Sections, Spleen

#### Product data:

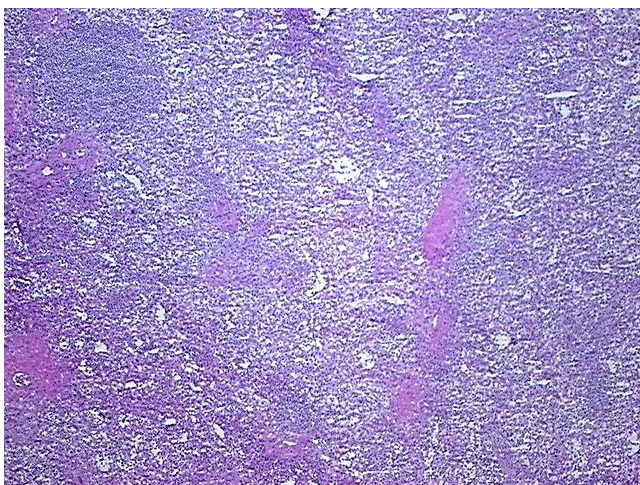
Product Type:	Frozen Sections
Disease State:	Other Disease
Diagnosis Category:	Hematopoiesis
Tissue:	Spleen
Frozen Sample ID:	FR00004DA8
Case ID:	CU0000001245
Tissue of Origin:	Spleen
Site of Finding:	Spleen
Appearance:	L
Sample Diagnosis (from Pathology Verification):	Extramedullary hematopoiesis
Normal:	45%
Lesional:	55%
Tumor:	0%
Tumor Hypo/Acellular Stroma:	0%
Tumor Hypercellular Stroma:	0%
Necrosis:	0%
Pathology Verification notes from H&E review:	Non Tumor Structures: 70% Red pulp, 30% White pulp; Other Features/Comments: Patient with myeloproliferative disorder
CASE Diagnosis (from medical center path report):	Extramedullary hematopoiesis
Age:	76
Gender:	Male
Storage:	Store frozen tissue sections at -80°C.



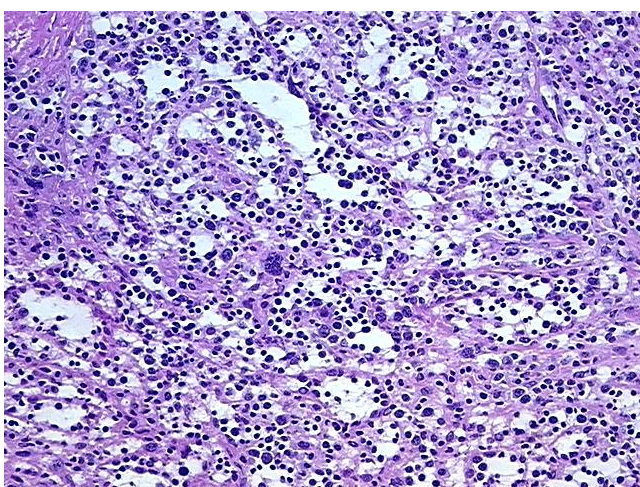
[View online »](#)

**Stability:** All frozen tissue sections are stable for 1 year from date of purchase if stored at -80°C without repeated freeze/thaws.

**Product images:**



4x Image



20x Image