

## Product datasheet for **CS607646**

### Frozen Tissue Sections, Unknown tissue

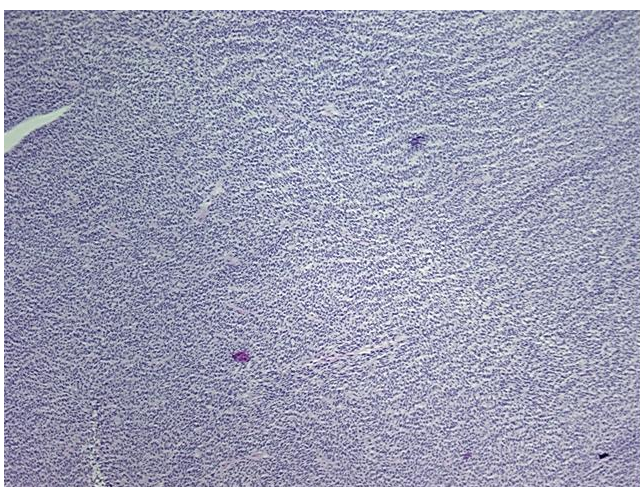
#### Product data:

Product Type:	Frozen Sections
Disease State:	Cancer
Diagnosis Category:	Sarcoma
Tissue:	Unknown origin
Frozen Sample ID:	FR00004DA3
Case ID:	CU0000001244
Tissue of Origin:	Unknown tissue
Site of Finding:	Brain
Appearance:	T
Sample Diagnosis (from Pathology Verification):	Sarcoma, spindle cell, metastatic
Normal:	0%
Lesional:	0%
Tumor:	95%
Tumor Hypo/Acellular Stroma:	0%
Tumor Hypercellular Stroma:	0%
Necrosis:	5%
Pathology Verification notes from H&E review:	Brain with metastatic spindle cell sarcoma
CASE Diagnosis (from medical center path report):	Sarcoma, spindle cell, metastatic
Age:	26
Gender:	Male
Tumor Grade:	Not Reported

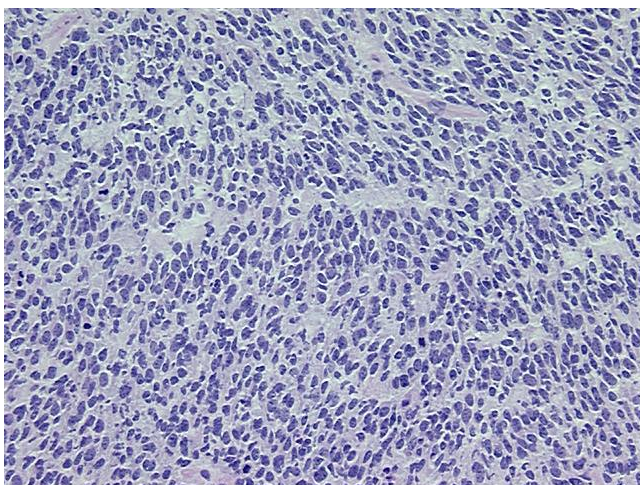


[View online »](#)

Minimum Stage Grouping:	Not Reported
T (Extent of Primary Tumor):	Not Reported
N (Lymph node metastasis):	Not Reported
M (Distant metastasis):	Not Reported
Storage:	Store frozen tissue sections at -80°C.
Stability:	All frozen tissue sections are stable for 1 year from date of purchase if stored at -80°C without repeated freeze/thaws.

**Product images:**

4x Image



20x Image