

Product datasheet for **CS607623**

Frozen Tissue Sections, Kidney

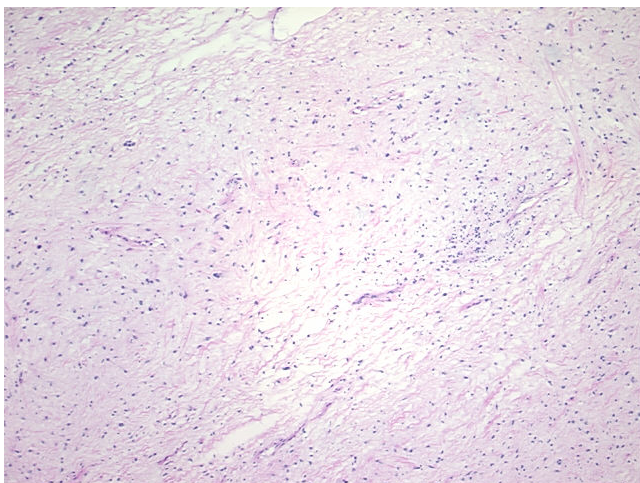
Product data:

Product Type:	Frozen Sections
Disease State:	Cancer
Diagnosis Category:	Renal Cell Carcinoma
Tissue:	Kidney
Frozen Sample ID:	FR00004D63
Case ID:	CU0000001240
Tissue of Origin:	Kidney
Site of Finding:	Kidney
Appearance:	T
Sample Diagnosis (from Pathology Verification):	Carcinoma of kidney, renal cell, sarcomatoid
Normal:	30%
Lesional:	0%
Tumor:	40%
Tumor Hypo/Acellular Stroma:	30%
Tumor Hypercellular Stroma:	0%
Necrosis:	0%
Pathology Verification notes from H&E review:	Sample contains 30% normal fibrous capsule with chronic inflammation
CASE Diagnosis (from medical center path report):	Carcinoma of kidney, renal cell, sarcomatoid
Age:	71
Gender:	Male
Tumor Grade:	Fuhrman G4: Nuclei bizarre and multilobated

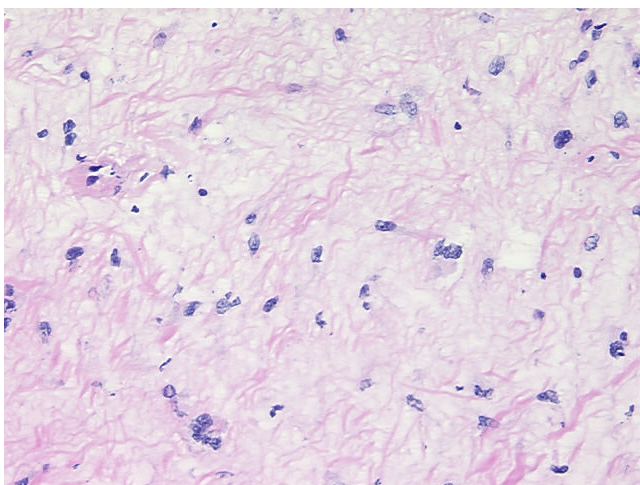


[View online »](#)

Minimum Stage Grouping:	II
T (Extent of Primary Tumor):	T2
N (Lymph node metastasis):	NX
M (Distant metastasis):	MX
Diagnostic Test Results:	CD227 ~ MUC1 ~ EMA ~ CA15-3 ! by IHC,Negative; Cytokeratin 7 ~ CK7 ! by IHC,Negative; Cytokeratin 20 ~ CK20 ! by IHC,Negative; CD10 ~ CALLA ~ Common ALL antigen ! by IHC,Positive
Storage:	Store frozen tissue sections at -80°C.
Stability:	All frozen tissue sections are stable for 1 year from date of purchase if stored at -80°C without repeated freeze/thaws.

Product images:

4x Image



20x Image