

## Product datasheet for **CS607589**

### Frozen Tissue Sections, Colon

#### Product data:

<b>Product Type:</b>	Frozen Sections
<b>Disease State:</b>	Cancer
<b>Diagnosis Category:</b>	Colorectal Cancer
<b>Tissue:</b>	Colon
<b>Frozen Sample ID:</b>	FR00004D27
<b>Case ID:</b>	CU0000001237
<b>Tissue of Origin:</b>	Colon
<b>Site of Finding:</b>	Liver
<b>Appearance:</b>	T
<b>Sample Diagnosis (from Pathology Verification):</b>	Adenocarcinoma of colon, metastatic
<b>Normal:</b>	50%
<b>Lesional:</b>	0%
<b>Tumor:</b>	30%
<b>Tumor Hypo/Acellular Stroma:</b>	0%
<b>Tumor Hypercellular Stroma:</b>	10%
<b>Necrosis:</b>	10%
<b>Pathology Verification notes from H&amp;E review:</b>	colon adenocarcinoma metastasized to liver



[View online »](#)

**CASE Diagnosis (from medical center path report):** Adenocarcinoma of colon, metastatic

**Age:** 81

**Gender:** Male

**Tumor Grade:** Not Reported

**Minimum Stage Grouping:** IV

**T (Extent of Primary Tumor):** TX

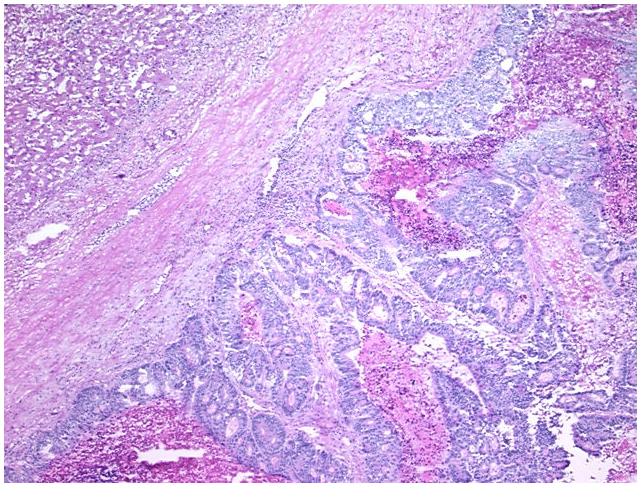
**N (Lymph node metastasis):** NX

**M (Distant metastasis):** M1

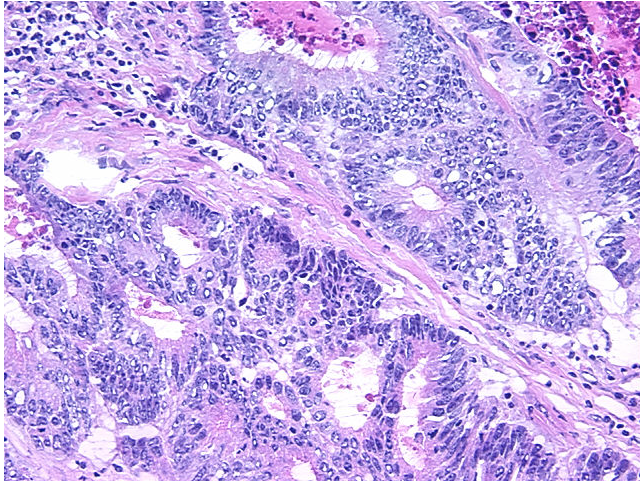
**Storage:** Store frozen tissue sections at  $-80^{\circ}\text{C}$ .

**Stability:** All frozen tissue sections are stable for 1 year from date of purchase if stored at  $-80^{\circ}\text{C}$  without repeated freeze/thaws.

**Product images:**



4x Image



20x Image