

Product datasheet for **CS606901**

Frozen Tissue Sections, Kidney

Product data:

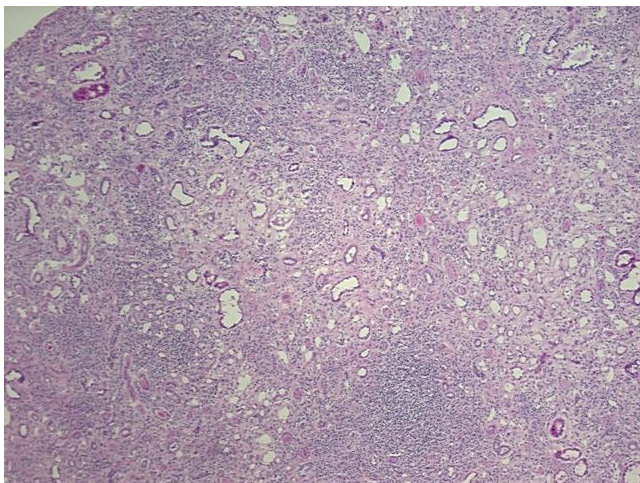
Product Type:	Frozen Sections
Disease State:	Other Disease
Diagnosis Category:	Kidney Disease
Tissue:	Kidney
Frozen Sample ID:	FR00003D75
Case ID:	CU0000001162
Tissue of Origin:	Kidney
Site of Finding:	Kidney
Appearance:	L
Sample Diagnosis (from Pathology Verification):	Rejection of allograft of kidney
Normal:	0%
Lesional:	100%
Tumor:	0%
Tumor Hypo/Acellular Stroma:	0%
Tumor Hypercellular Stroma:	0%
Necrosis:	0%
Pathology Verification notes from H&E review:	0% cortex, 100% medulla
CASE Diagnosis (from medical center path report):	Rejection of allograft of kidney
Age:	56
Gender:	Female
Storage:	Store frozen tissue sections at -80°C.



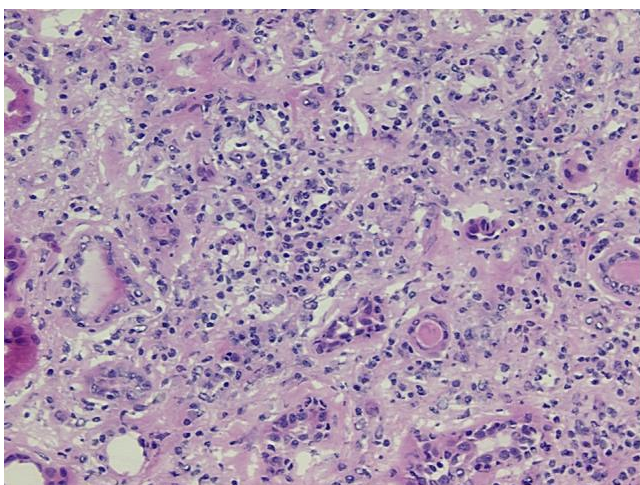
[View online »](#)

Stability: All frozen tissue sections are stable for 1 year from date of purchase if stored at -80°C without repeated freeze/thaws.

Product images:



4x Image



20x Image