

Product datasheet for **CS606652**

Frozen Tissue Sections, Prostate

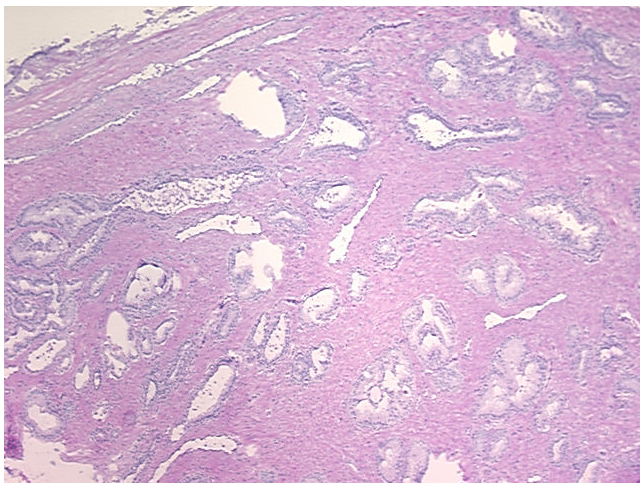
Product data:

Product Type:	Frozen Sections
Disease State:	Other Disease
Diagnosis Category:	Benign Prostatic Hyperplasia (BPH)
Tissue:	Prostate
Frozen Sample ID:	FR00003BCC
Case ID:	CU0000001131
Tissue of Origin:	Prostate
Site of Finding:	Prostate
Appearance:	L
Sample Diagnosis (from Pathology Verification):	Hyperplasia of prostate
Normal:	40%
Lesional:	40%
Tumor:	0%
Tumor Hypo/Acellular Stroma:	0%
Tumor Hypercellular Stroma:	0%
Necrosis:	20%
Pathology Verification notes from H&E review:	40% Glandular epithelium, 40% Stroma, 20% Infarcted tissue; Contains benign prostate hyperplasia
CASE Diagnosis (from medical center path report):	Hyperplasia of prostate
Age:	76
Gender:	Male
Storage:	Store frozen tissue sections at -80°C.

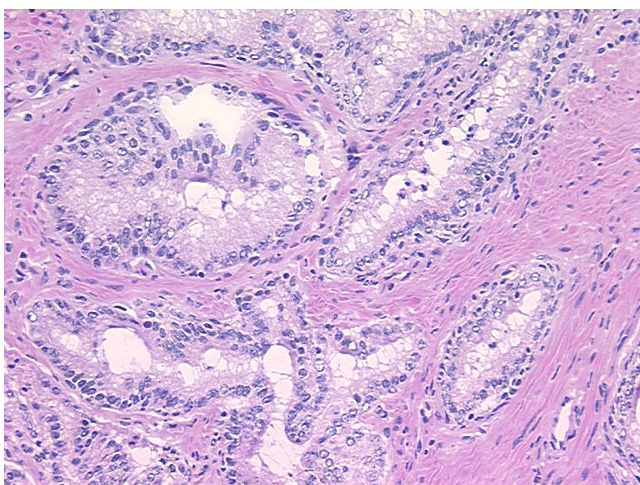

[View online »](#)

Stability: All frozen tissue sections are stable for 1 year from date of purchase if stored at -80°C without repeated freeze/thaws.

Product images:



4x Image



20x Image