

Product datasheet for **CS606647**

Frozen Tissue Sections, Prostate

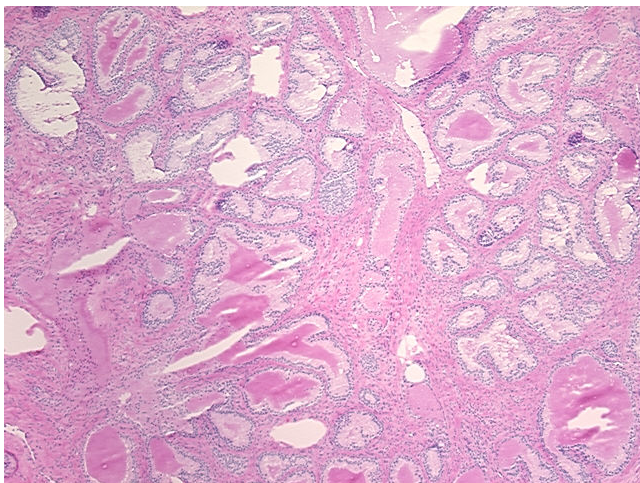
Product data:

| | |
|---|--|
| Product Type: | Frozen Sections |
| Disease State: | Other Disease |
| Diagnosis Category: | Benign Prostatic Hyperplasia (BPH) |
| Tissue: | Prostate |
| Frozen Sample ID: | FR00003BC7 |
| Case ID: | CU00000001131 |
| Tissue of Origin: | Prostate |
| Site of Finding: | Prostate |
| Appearance: | L |
| Sample Diagnosis (from Pathology Verification): | Hyperplasia of prostate |
| Normal: | 40% |
| Lesional: | 60% |
| Tumor: | 0% |
| Tumor Hypo/Acellular Stroma: | 0% |
| Tumor Hypercellular Stroma: | 0% |
| Necrosis: | 0% |
| Pathology Verification notes from H&E review: | 60% Glandular epithelium, 40% Stroma; Contains benign prostate hyperplasia |
| CASE Diagnosis (from medical center path report): | Hyperplasia of prostate |
| Age: | 76 |
| Gender: | Male |
| Storage: | Store frozen tissue sections at -80°C. |

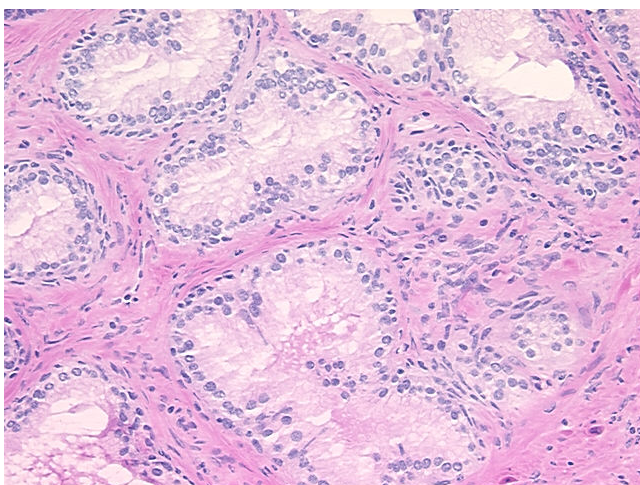

[View online »](#)

Stability: All frozen tissue sections are stable for 1 year from date of purchase if stored at -80°C without repeated freeze/thaws.

Product images:



4x Image



20x Image