

Product datasheet for **CS606363**

Frozen Tissue Sections, Colon: transverse

Product data:

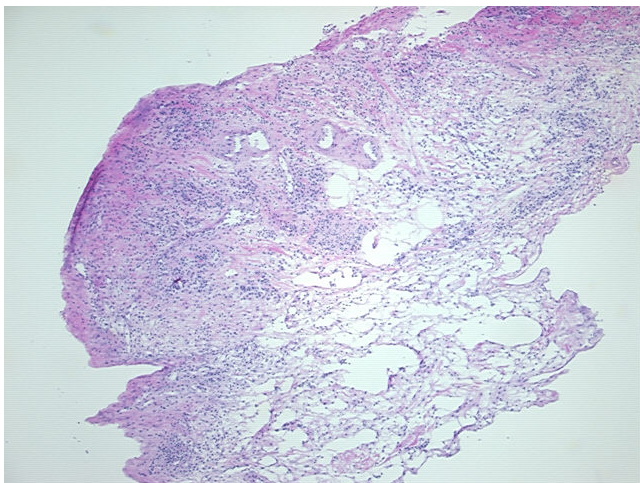
Product Type:	Frozen Sections
Disease State:	Other Disease
Diagnosis Category:	Diverticulitis
Tissue:	Colon
Frozen Sample ID:	FR00003A3C
Case ID:	CU0000001100
Tissue of Origin:	Colon: transverse
Site of Finding:	Colon: transverse
Appearance:	L
Sample Diagnosis (from Pathology Verification):	Diverticulitis of colon
Normal:	0%
Lesional:	100%
Tumor:	0%
Tumor Hypo/Acellular Stroma:	0%
Tumor Hypercellular Stroma:	0%
Necrosis:	0%
Pathology Verification notes from H&E review:	No mucosa or wall seen; Inflamed serosa associated with diverticulitis
CASE Diagnosis (from medical center path report):	Diverticulitis of colon
Age:	81
Gender:	Female
Storage:	Store frozen tissue sections at -80°C.



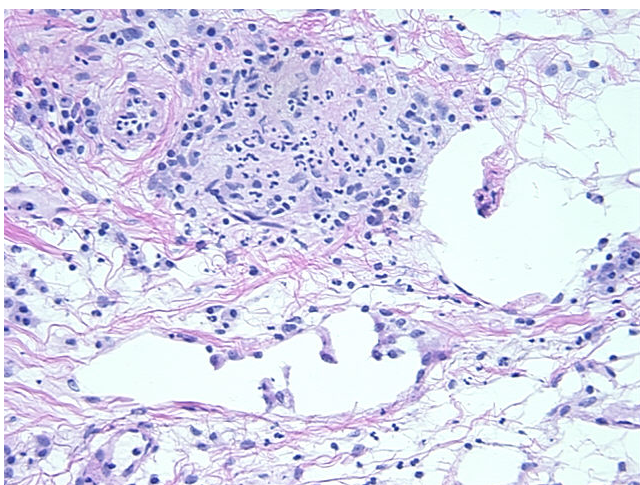
[View online »](#)

Stability: All frozen tissue sections are stable for 1 year from date of purchase if stored at -80°C without repeated freeze/thaws.

Product images:



4x Image



20x Image