

Product datasheet for CS606293

Frozen Tissue Sections, Lymph node

Product data:

Product Type:	Frozen Sections
Disease State:	Other Disease
Diagnosis Category:	Hyperplasia
Tissue:	Lymph node
Frozen Sample ID:	FR000039D1
Case ID:	CU0000001083
Tissue of Origin:	Lymph node
Site of Finding:	Lymph node
Appearance:	L
Sample Diagnosis (from Pathology Verification):	Hyperplasia of lymph node, atypical
Normal:	0%
Lesional:	100%
Tumor:	0%
Tumor Hypo/Acellular Stroma:	0%
Tumor Hypercellular Stroma:	0%
Necrosis:	0%
Pathology Verification notes from H&E review:	10% follicles, 90% interfollicular area; Atypical lymphoid hyperplasia
CASE Diagnosis (from medical center path report):	Hyperplasia of lymph node, atypical
Age:	90
Gender:	Female



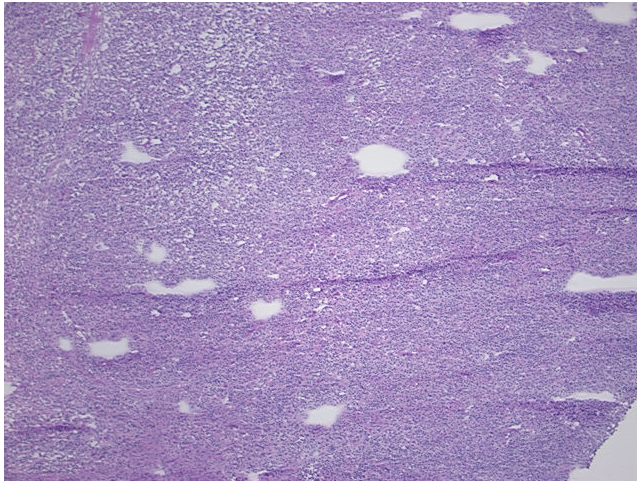
[View online »](#)

Diagnostic Test Results: CD3 ~ Leu4 ~ UCHT1 ! by IHC,Positive; Ki67 ~ MIB1 ! by IHC,Low; CD79a ~ Ig alpha ! by IHC,Positive; CD30 ~ Ki1 ! by IHC,Negative; CD20 ~ B1 ~ Leu16 ! by IHC,Positive

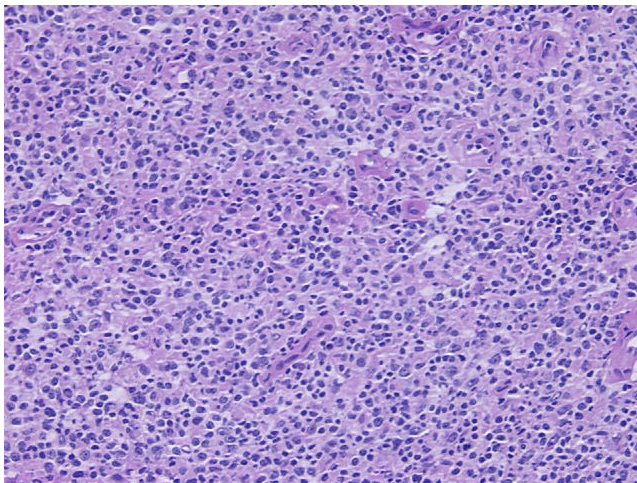
Storage: Store frozen tissue sections at -80°C.

Stability: All frozen tissue sections are stable for 1 year from date of purchase if stored at -80°C without repeated freeze/thaws.

Product images:



4x Image



20x Image