

Product datasheet for **CS605954**

Frozen Tissue Sections, Lung

Product data:

Product Type:	Frozen Sections
Disease State:	Other Disease
Diagnosis Category:	Pneumonia
Tissue:	Lung
Frozen Sample ID:	FR0000376C
Case ID:	CU0000001048
Tissue of Origin:	Lung
Site of Finding:	Lung
Appearance:	L
Sample Diagnosis (from Pathology Verification):	Pneumonia, interstitial, nonspecific, fibrosing
Normal:	0%
Lesional:	100%
Tumor:	0%
Tumor Hypo/Acellular Stroma:	0%
Tumor Hypercellular Stroma:	0%
Necrosis:	0%
Pathology Verification notes from H&E review:	Non Tumor Structures: 10% Alveoli, 30% Bronchioles, 60% Fibrovascular septa
CASE Diagnosis (from medical center path report):	Carcinoma of lung, squamous cell
Age:	81
Gender:	Male
Tumor Grade:	AJCC G2: Moderately differentiated



[View online »](#)

Minimum Stage Grouping: IB

T (Extent of Primary Tumor): T2

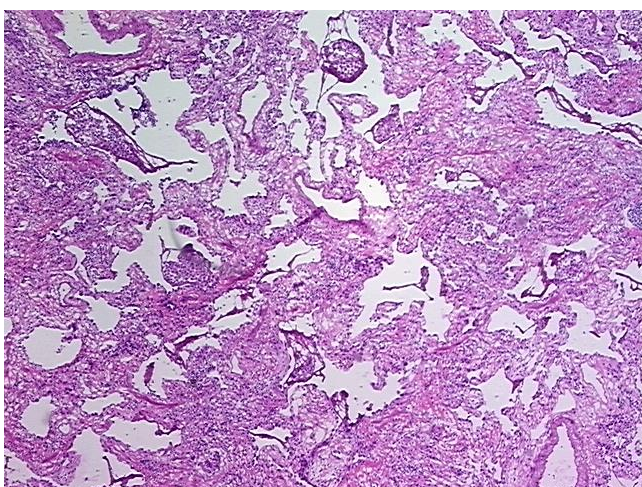
N (Lymph node metastasis): NX

M (Distant metastasis): MX

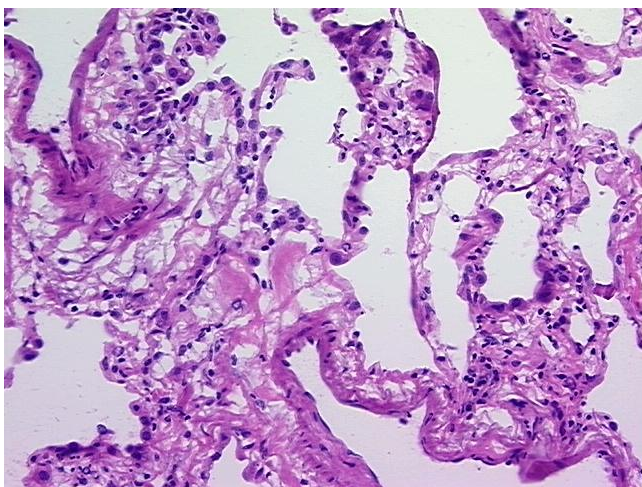
Storage: Store frozen tissue sections at -80°C.

Stability: All frozen tissue sections are stable for 1 year from date of purchase if stored at -80°C without repeated freeze/thaws.

Product images:



4x Image



20x Image