

Product datasheet for CS605212

Frozen Tissue Sections, Skin

Product data:

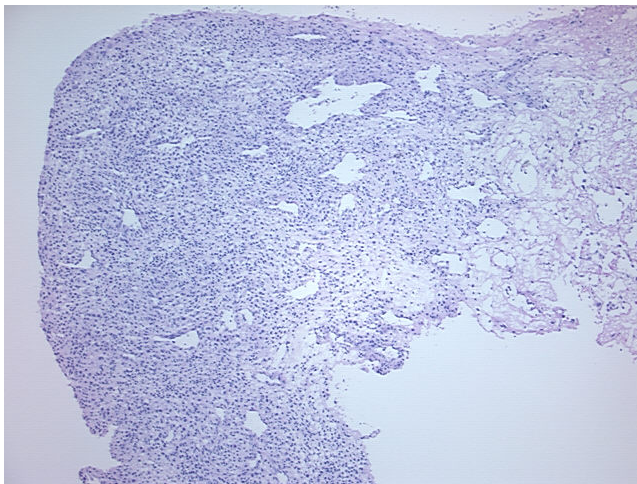
Product Type:	Frozen Sections
Disease State:	Cancer
Diagnosis Category:	Melanoma
Tissue:	Skin
Frozen Sample ID:	FR000031BB
Case ID:	CU0000000970
Tissue of Origin:	Skin
Site of Finding:	Lung
Appearance:	T
Sample Diagnosis (from Pathology Verification):	Malignant melanoma, metastatic
Normal:	0%
Lesional:	0%
Tumor:	35%
Tumor Hypo/Acellular Stroma:	0%
Tumor Hypercellular Stroma:	0%
Necrosis:	65%
CASE Diagnosis (from medical center path report):	Malignant melanoma, metastatic
Age:	56
Gender:	Male
Tumor Grade:	Not Reported
Minimum Stage Grouping:	IV



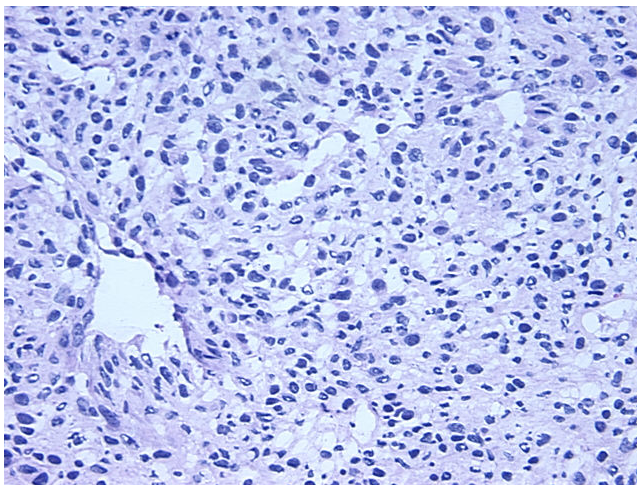
[View online »](#)

T (Extent of Primary Tumor):	TX
N (Lymph node metastasis):	NX
M (Distant metastasis):	M1b
Diagnostic Test Results:	HMB45 melanoma antigen ~ GP100 ! by IHC,Negative; S100 protein,Positive; Cytokeratin CAM5.2 ~ CAM5.2 ! by IHC,Negative; Cytokeratin AE1/AE3 ~ AE1/AE3 ! by IHC,Negative
Storage:	Store frozen tissue sections at -80°C.
Stability:	All frozen tissue sections are stable for 1 year from date of purchase if stored at -80°C without repeated freeze/thaws.

Product images:



4x Image



20x Image