

## Product datasheet for **CS604402**

### Frozen Tissue Sections, Endometriotic tissue

#### Product data:

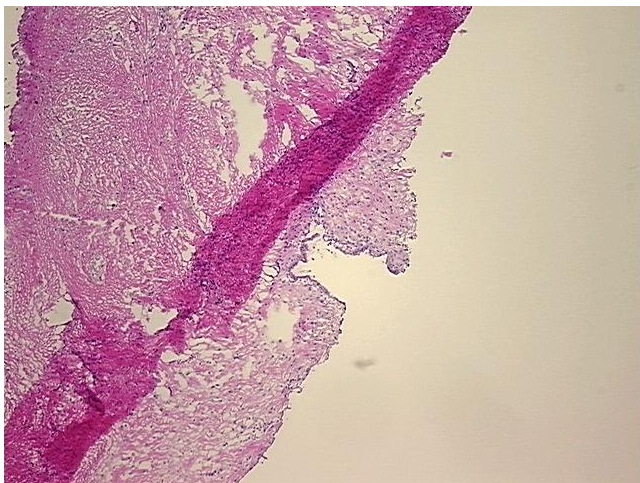
Product Type:	Frozen Sections
Disease State:	Other Disease
Diagnosis Category:	Endometriosis
Tissue:	Endometriotic tissue
Frozen Sample ID:	FR00002B62
Case ID:	CU0000000872
Tissue of Origin:	Endometriotic tissue
Site of Finding:	Endometrium
Appearance:	L
Sample Diagnosis (from Pathology Verification):	Endometriosis
Normal:	95%
Lesional:	5%
Tumor:	0%
Tumor Hypo/Acellular Stroma:	0%
Tumor Hypercellular Stroma:	0%
Necrosis:	0%
Pathology Verification notes from H&E review:	normal: 100% fibromuscular tissue lesion, 90% stroma with macrophages, 10% glands
CASE Diagnosis (from medical center path report):	Endometriosis
Age:	41
Gender:	Female
Storage:	Store frozen tissue sections at -80°C.



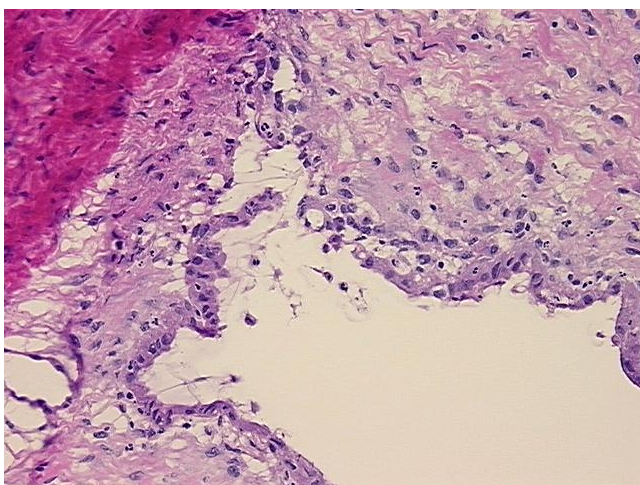
[View online »](#)

**Stability:** All frozen tissue sections are stable for 1 year from date of purchase if stored at -80°C without repeated freeze/thaws.

**Product images:**



4x Image



20x Image