

Product datasheet for **CS603924**

Frozen Tissue Sections, Cervix

Product data:

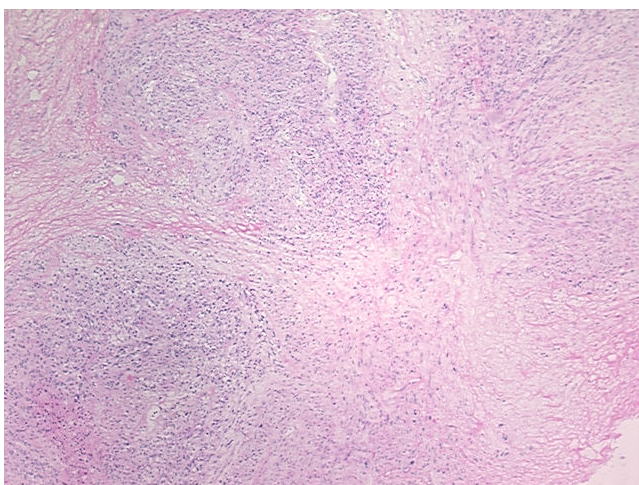
Product Type:	Frozen Sections
Disease State:	Cancer
Diagnosis Category:	Sarcoma
Tissue:	Cervix
Frozen Sample ID:	FR0000281A
Case ID:	CU0000000833
Tissue of Origin:	Cervix
Site of Finding:	Uterus
Appearance:	T
Sample Diagnosis (from Pathology Verification):	Leiomyosarcoma
Normal:	0%
Lesional:	0%
Tumor:	50%
Tumor Hypo/Acellular Stroma:	0%
Tumor Hypercellular Stroma:	0%
Necrosis:	50%
Pathology Verification notes from H&E review:	Tumor: arising in the cervix
CASE Diagnosis (from medical center path report):	Leiomyosarcoma
Age:	51
Gender:	Female
Tumor Grade:	FIGO G3: Poorly differentiated



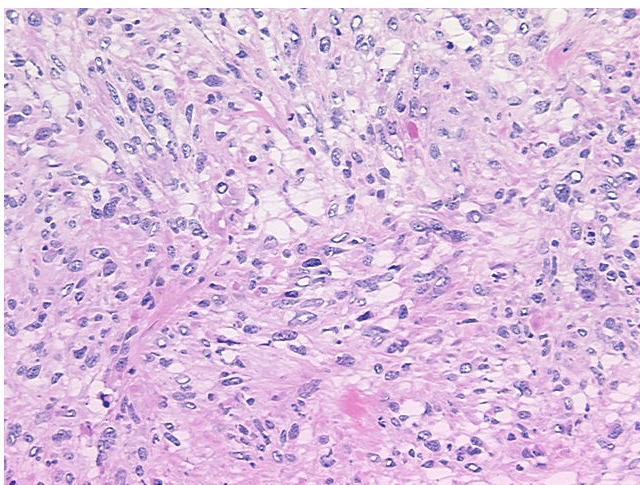
[View online »](#)

Minimum Stage Grouping:	IIIB
T (Extent of Primary Tumor):	T3b
N (Lymph node metastasis):	NX
M (Distant metastasis):	MX
Diagnostic Test Results:	Vimentin ~ VIM ! by IHC,Positive; S100 protein,Negative; Desmin ! by IHC,Positive, focal; Cytokeratin AE1/AE3 ~ AE1/AE3 ! by IHC,Positive, focal; MSA ~ Muscle Specific Actin,Positive
Storage:	Store frozen tissue sections at -80°C.
Stability:	All frozen tissue sections are stable for 1 year from date of purchase if stored at -80°C without repeated freeze/thaws.

Product images:



4x Image



20x Image