

## Product datasheet for CS603608

### Frozen Tissue Sections, Liver

#### Product data:

Product Type:	Frozen Sections
Disease State:	Normal
Diagnosis Category:	Normal
Tissue:	Liver
Frozen Sample ID:	FR0000259A
Case ID:	CU0000000787
Tissue of Origin:	Liver
Site of Finding:	Liver
Appearance:	R
Sample Diagnosis (from Pathology Verification):	Within normal limits
Normal:	100%
Lesional:	0%
Tumor:	0%
Tumor Hypo/Acellular Stroma:	0%
Tumor Hypercellular Stroma:	0%
Necrosis:	0%
Pathology Verification notes from H&E review:	95% Lobules, 5% Portal triads
CASE Diagnosis (from medical center path report):	Adenocarcinoma of colon, metastatic
Age:	71
Gender:	Female
Tumor Grade:	Not Reported



[View online »](#)

Minimum Stage Grouping: IV

T (Extent of Primary Tumor): TX

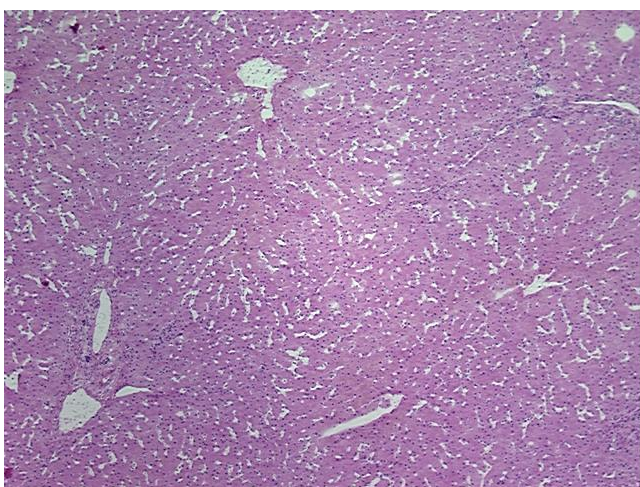
N (Lymph node metastasis): NX

M (Distant metastasis): M1

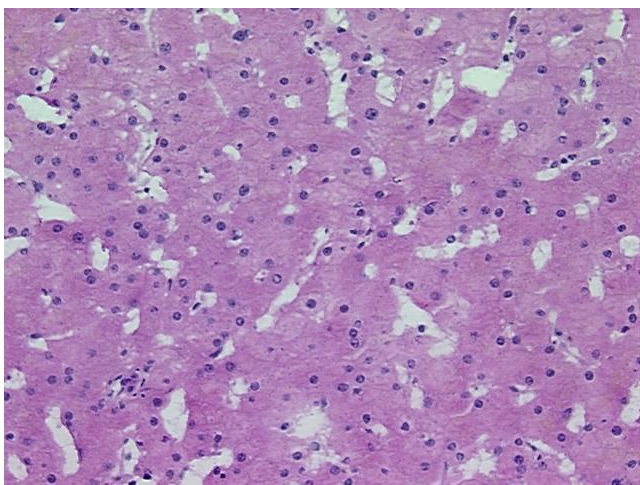
Storage: Store frozen tissue sections at -80°C.

Stability: All frozen tissue sections are stable for 1 year from date of purchase if stored at -80°C without repeated freeze/thaws.

### Product images:



4x Image



20x Image