

## Product datasheet for **CS603350**

### Frozen Tissue Sections, Lymph node

#### Product data:

Product Type:	Frozen Sections
Disease State:	Other Disease
Diagnosis Category:	Inflammation (various)
Tissue:	Lymph node
Frozen Sample ID:	FR00002325
Case ID:	CU0000000770
Tissue of Origin:	Lymph node
Site of Finding:	Lymph node
Appearance:	L
Sample Diagnosis (from Pathology Verification):	Inflammation of lymph node, chronic
Normal:	0%
Lesional:	100%
Tumor:	0%
Tumor Hypo/Acellular Stroma:	0%
Tumor Hypercellular Stroma:	0%
Necrosis:	0%
Pathology Verification notes from H&E review:	Chronic inflammation
CASE Diagnosis (from medical center path report):	Inflammation of lymph node, chronic
Age:	36
Gender:	Male



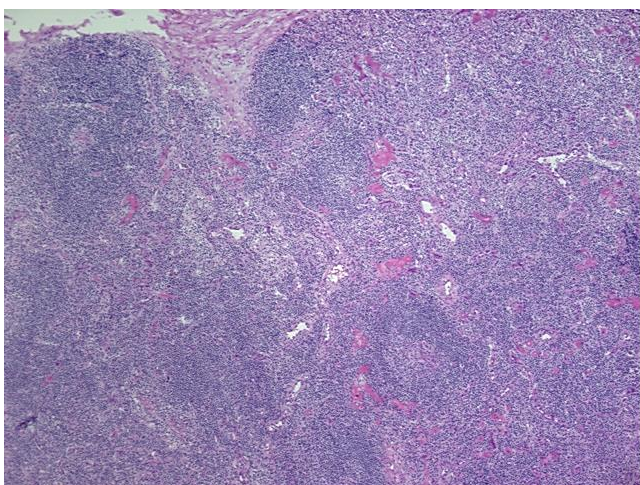
[View online »](#)

**Diagnostic Test Results:** CD3 ~ Leu4 ~ UCHT1 ! by FC,Positive; CD19 ~ B4 ~ Leu12 ! by IHC,Positive; CD22 ~ Leu14 ! by IHC,Positive; Kappa light chain ! by IHC,Positive; Lambda light chain ! by IHC,Positive; CD5 ~ Leu1 ! by IHC,Positive; CD45 ~ Leukocyte common antigen

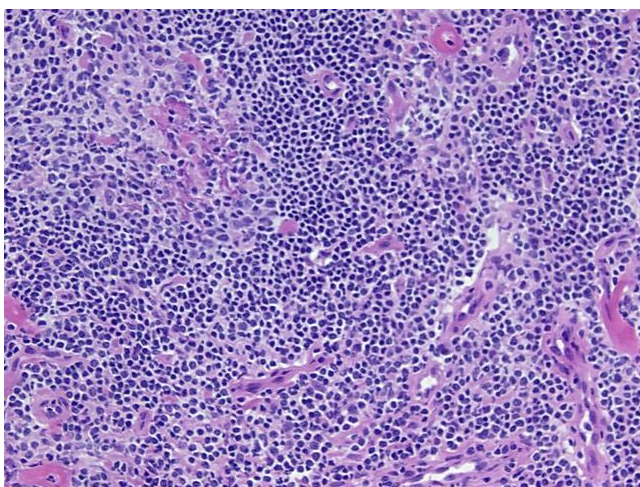
**Storage:** Store frozen tissue sections at -80°C.

**Stability:** All frozen tissue sections are stable for 1 year from date of purchase if stored at -80°C without repeated freeze/thaws.

**Product images:**



4x Image



20x Image