

## Product datasheet for CS602972

### Frozen Tissue Sections, Breast

#### Product data:

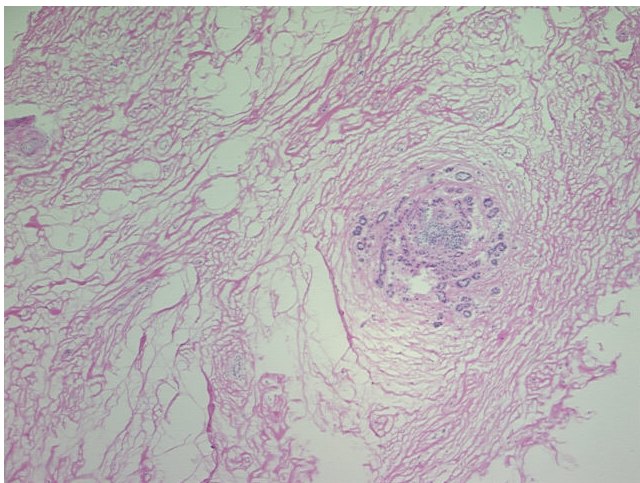
|   |  |
|---|--|
| Product Type:                                     | Frozen Sections  |
| Disease State:                                    | Other Disease  |
| Diagnosis Category:                               | Fibrocystic Changes of Breast  |
| Tissue:   | Breast   |
| Frozen Sample ID:                                 | FR00001FD3   |
| Case ID:  | CU0000000727   |
| Tissue of Origin:                                 | Breast   |
| Site of Finding:                                  | Breast   |
| Appearance:                                       | L  |
| Sample Diagnosis (from Pathology Verification):   | Fibroadenomatous changes of breast   |
| Normal:   | 90%  |
| Lesional:   | 10%  |
| Tumor:  | 0%   |
| Tumor Hypo/Acellular Stroma:                      | 0%   |
| Tumor Hypercellular Stroma:                       | 0%   |
| Necrosis:   | 0%   |
| Pathology Verification notes from H&E review:     | lesion is also associated with fibrocystic changes (mild) and some features of sclerosing adenosis; normal: 50% dense fibrous tissue, 50% adipose tissue |
| CASE Diagnosis (from medical center path report): | Ductal hyperplasia of breast, atypical   |
| Age:  | 41   |
| Gender:   | Female   |
| Storage:  | Store frozen tissue sections at -80°C.   |



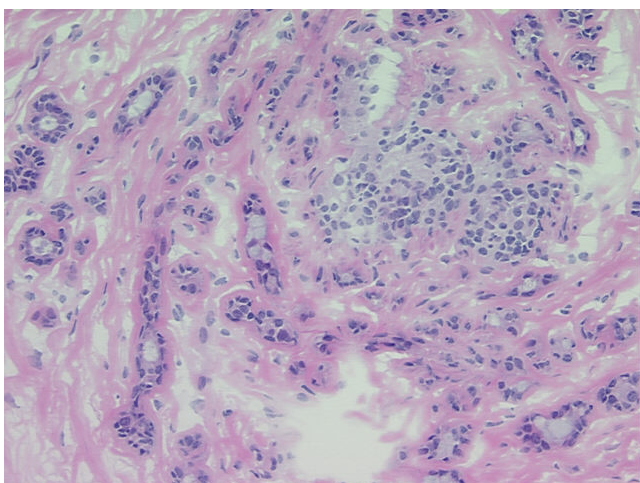
[View online »](#)

**Stability:** All frozen tissue sections are stable for 1 year from date of purchase if stored at -80°C without repeated freeze/thaws.

**Product images:**



4x Image



20x Image