

## Product datasheet for **CS602794**

### Frozen Tissue Sections, Colon

#### Product data:

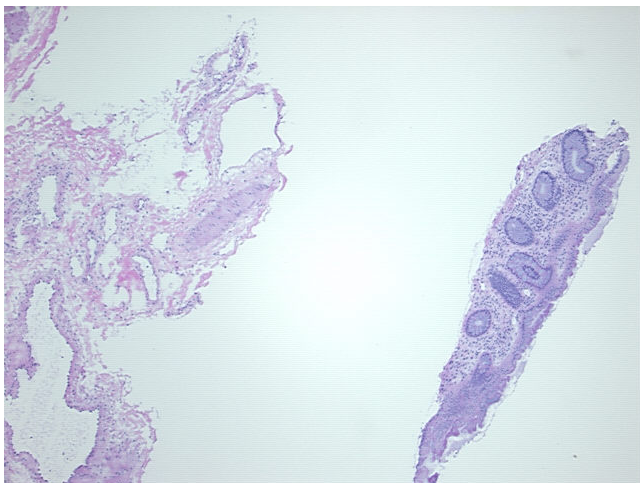
Product Type:	Frozen Sections
Disease State:	Other Disease
Diagnosis Category:	Diverticulitis
Tissue:	Colon
Frozen Sample ID:	FR00001E42
Case ID:	CU0000000708
Tissue of Origin:	Colon
Site of Finding:	Colon
Appearance:	R
Sample Diagnosis (from Pathology Verification):	Diverticulitis of colon
Normal:	100%
Lesional:	0%
Tumor:	0%
Tumor Hypo/Acellular Stroma:	0%
Tumor Hypercellular Stroma:	0%
Necrosis:	0%
Pathology Verification notes from H&E review:	5% colonic mucosa; 95% muscular wall, submucosa and serosa
CASE Diagnosis (from medical center path report):	Diverticulitis of colon
Age:	56
Gender:	Female
Storage:	Store frozen tissue sections at -80°C.



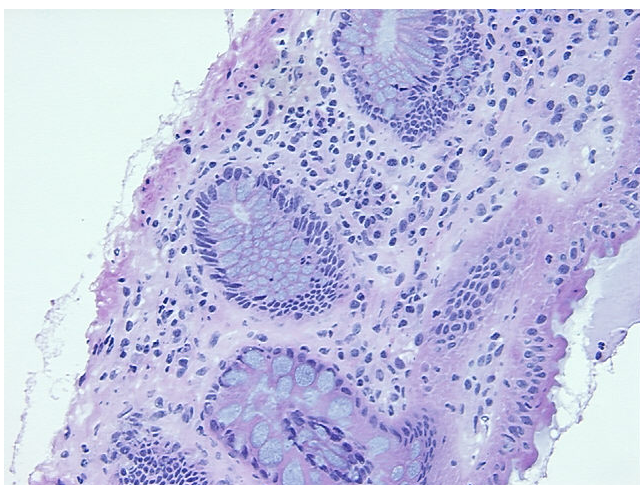
[View online »](#)

**Stability:** All frozen tissue sections are stable for 1 year from date of purchase if stored at -80°C without repeated freeze/thaws.

**Product images:**



4x Image



20x Image