

## Product datasheet for **CS602674**

### Frozen Tissue Sections, Cartilage

#### Product data:

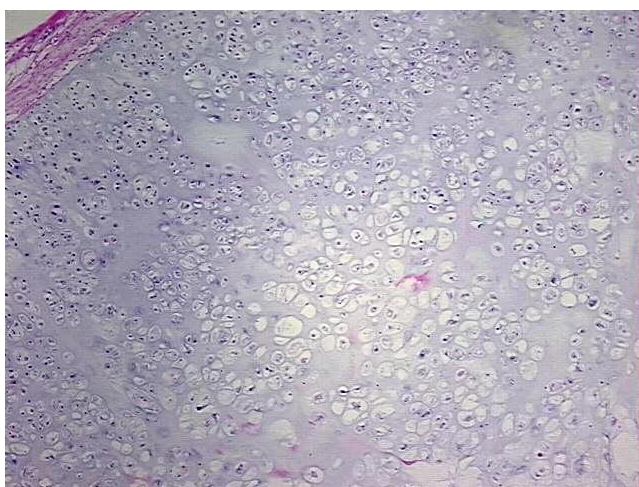
|   |                              |
|---|------------------------------|
| Product Type:                                     | Frozen Sections              |
| Disease State:                                    | Cancer                       |
| Diagnosis Category:                               | Sarcoma                      |
| Tissue:   | Cartilage                    |
| Frozen Sample ID:                                 | FR00001C73                   |
| Case ID:  | CU0000000691                 |
| Tissue of Origin:                                 | Cartilage                    |
| Site of Finding:                                  | Chest wall                   |
| Appearance:                                       | Tumor                        |
| Sample Diagnosis (from Pathology Verification):   | Chondrosarcoma, recurrent    |
| Normal:   | 0%                           |
| Lesional:   | 0%                           |
| Tumor:  | 80%                          |
| Tumor Hypo/Acellular Stroma:                      | 10%                          |
| Tumor Hypercellular Stroma:                       | 0%                           |
| Necrosis:   | 10%                          |
| Pathology Verification notes from H&E review:     | Focal inflammation           |
| CASE Diagnosis (from medical center path report): | Chondrosarcoma, recurrent    |
| Age:  | 61                           |
| Gender:   | Male                         |
| Tumor Grade:                                      | AJCC G1: Well differentiated |



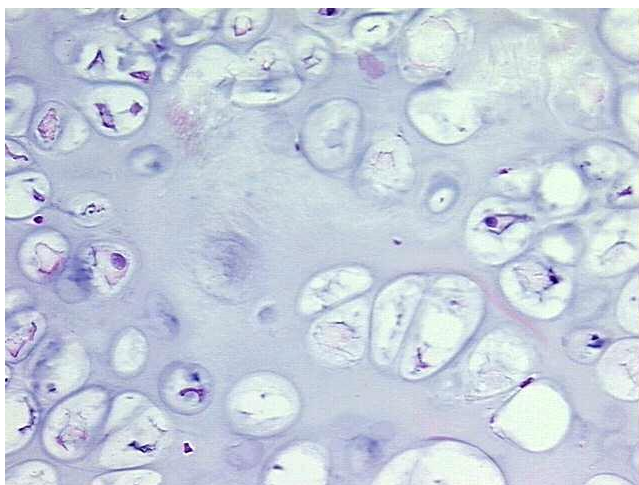
[View online »](#)

|                              |  |
|------------------------------|--|
| Minimum Stage Grouping:      | Not Reported   |
| T (Extent of Primary Tumor): | pTX  |
| N (Lymph node metastasis):   | pNX  |
| M (Distant metastasis):      | pMX  |
| Storage:                     | Store frozen tissue sections at -80°C.   |
| Stability:                   | All frozen tissue sections are stable for 1 year from date of purchase if stored at -80°C without repeated freeze/thaws. |

### Product images:



4x Image



20x Image