

Product datasheet for **CS602464**

Frozen Tissue Sections, Liver

Product data:

| | |
|---------------------------------------------------|-------------------------------------------------------------------------|
| Product Type: | Frozen Sections |
| Disease State: | Other Disease |
| Diagnosis Category: | Fatty Changes To Liver |
| Tissue: | Liver |
| Frozen Sample ID: | FR00001AF2 |
| Case ID: | CU00000000672 |
| Tissue of Origin: | Liver |
| Site of Finding: | Liver |
| Appearance: | L |
| Sample Diagnosis (from Pathology Verification): | Fatty changes to liver |
| Normal: | 35% |
| Lesional: | 65% |
| Tumor: | 0% |
| Tumor Hypo/Acellular Stroma: | 0% |
| Tumor Hypercellular Stroma: | 0% |
| Necrosis: | 0% |
| Pathology Verification notes from H&E review: | 95% lobules, 5% triads; moderate to marked steatosis; moderate fibrosis |
| CASE Diagnosis (from medical center path report): | Adenocarcinoma of colon, metastatic |
| Age: | 66 |
| Gender: | Female |
| Tumor Grade: | AJCC G2: Moderately differentiated |



[View online »](#)

Minimum Stage Grouping: IV

T (Extent of Primary Tumor): TX

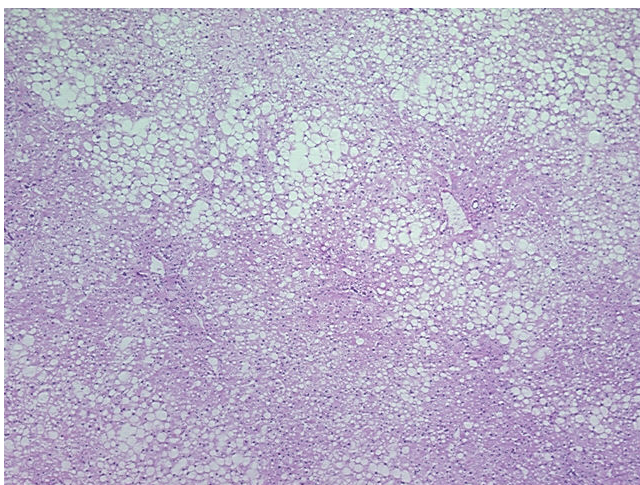
N (Lymph node metastasis): NX

M (Distant metastasis): M1

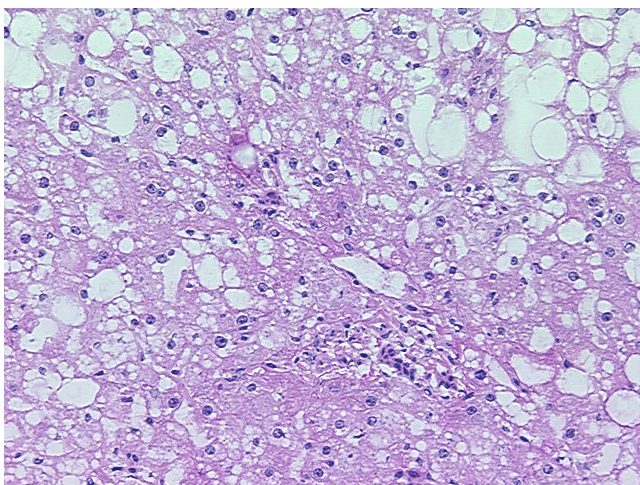
Storage: Store frozen tissue sections at -80°C.

Stability: All frozen tissue sections are stable for 1 year from date of purchase if stored at -80°C without repeated freeze/thaws.

Product images:



4x Image



20x Image