

Product datasheet for CS602309

Frozen Tissue Sections, Liver

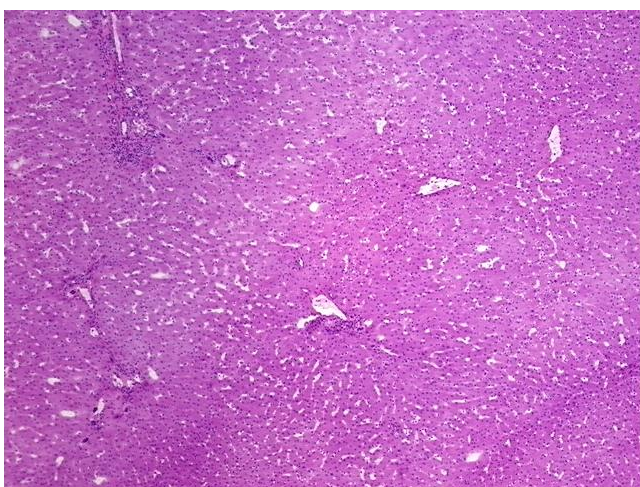
Product data:

Product Type:	Frozen Sections
Disease State:	Normal
Diagnosis Category:	Normal
Tissue:	Liver
Frozen Sample ID:	FR0000195F
Case ID:	CU00000000647
Tissue of Origin:	Liver
Site of Finding:	Liver
Appearance:	R
Sample Diagnosis (from Pathology Verification):	Within normal limits
Normal:	100%
Lesional:	0%
Tumor:	0%
Tumor Hypo/Acellular Stroma:	0%
Tumor Hypercellular Stroma:	0%
Necrosis:	0%
Pathology Verification notes from H&E review:	95% Lobules, 5% Portal triads
CASE Diagnosis (from medical center path report):	Carcinoma of gall bladder, squamous cell
Age:	51
Gender:	Male
Tumor Grade:	AJCC G3: Poorly differentiated

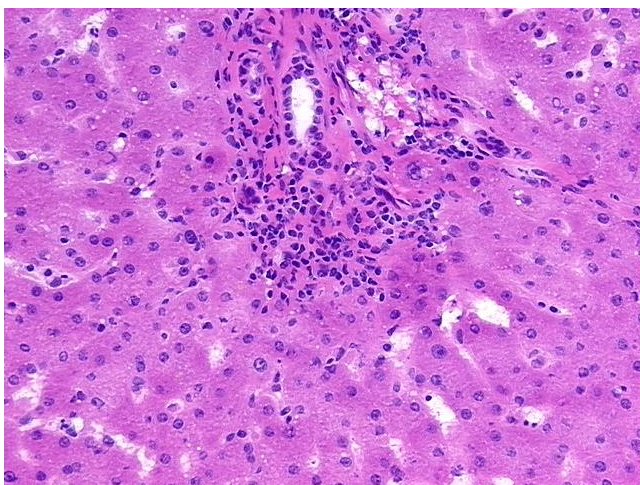


[View online »](#)

Minimum Stage Grouping:	IIA
T (Extent of Primary Tumor):	T3
N (Lymph node metastasis):	NX
M (Distant metastasis):	MX
Storage:	Store frozen tissue sections at -80°C.
Stability:	All frozen tissue sections are stable for 1 year from date of purchase if stored at -80°C without repeated freeze/thaws.

Product images:

4x Image



20x Image