

Product datasheet for CS602308

Frozen Tissue Sections, Liver

Product data:

Product Type:	Frozen Sections
Disease State:	Normal
Diagnosis Category:	Normal
Tissue:	Liver
Frozen Sample ID:	FR0000195D
Case ID:	CU0000000647
Tissue of Origin:	Liver
Site of Finding:	Liver
Appearance:	R
Sample Diagnosis (from Pathology Verification):	Within normal limits
Normal:	100%
Lesional:	0%
Tumor:	0%
Tumor Hypo/Acellular Stroma:	0%
Tumor Hypercellular Stroma:	0%
Necrosis:	0%
Pathology Verification notes from H&E review:	95% Lobules, 5% Portal triads
CASE Diagnosis (from medical center path report):	Carcinoma of gall bladder, squamous cell
Age:	51
Gender:	Male
Tumor Grade:	AJCC G3: Poorly differentiated



[View online »](#)

Minimum Stage Grouping: IIA

T (Extent of Primary Tumor): T3

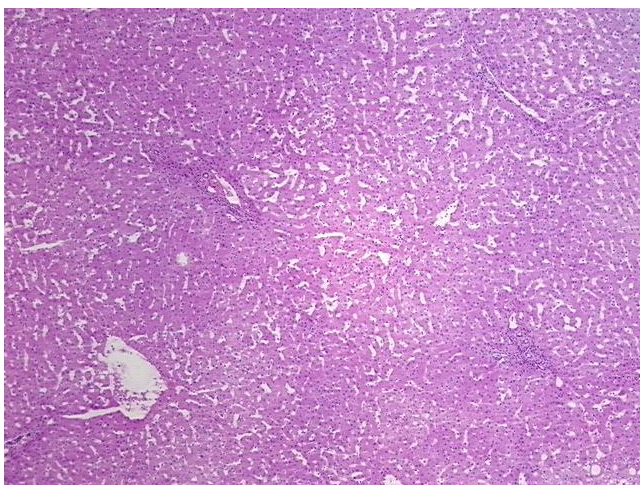
N (Lymph node metastasis): NX

M (Distant metastasis): MX

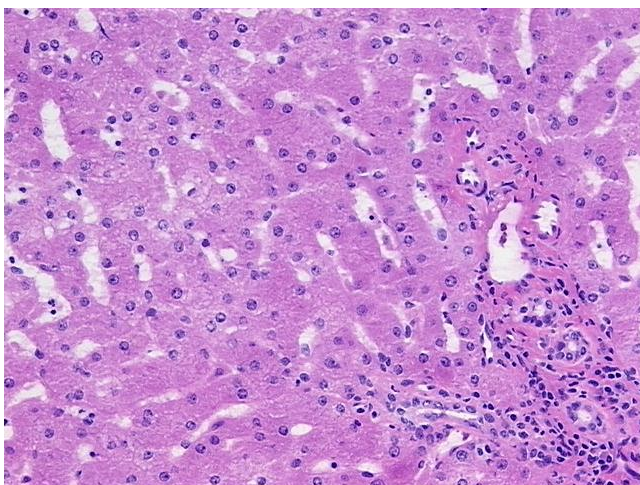
Storage: Store frozen tissue sections at -80°C.

Stability: All frozen tissue sections are stable for 1 year from date of purchase if stored at -80°C without repeated freeze/thaws.

Product images:



4x Image



20x Image