

Product datasheet for **CS602298**

Frozen Tissue Sections, Gastroesophageal junction

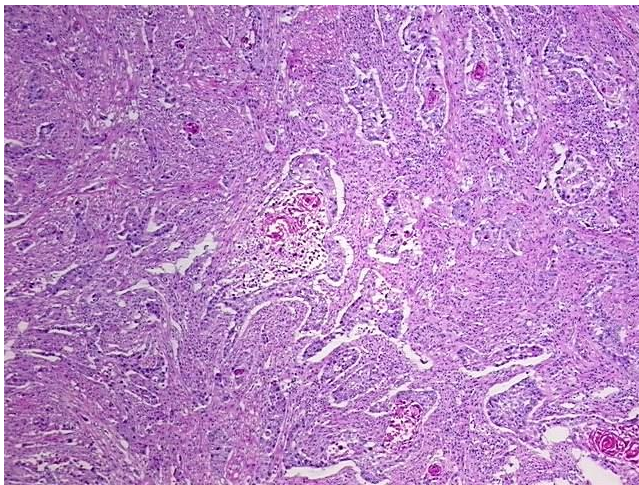
Product data:

Product Type:	Frozen Sections
Disease State:	Cancer
Tissue:	Gastroesophageal junction
Frozen Sample ID:	FR0000194D
Case ID:	CU0000000647
Tissue of Origin:	Gastroesophageal junction
Site of Finding:	Liver
Appearance:	Tumor
Sample Diagnosis (from Pathology Verification):	Carcinoma of gall bladder, squamous cell
Normal:	0%
Lesional:	0%
Tumor:	60%
Tumor Hypo/Acellular Stroma:	0%
Tumor Hypercellular Stroma:	37%
Necrosis:	3%
Pathology Verification notes from H&E review:	Contains prominent inflammatory infiltrate; extensively invades adjacent liver.
CASE Diagnosis (from medical center path report):	Carcinoma of gall bladder, squamous cell
Age:	51
Gender:	Male
Tumor Grade:	AJCC G3: Poorly differentiated

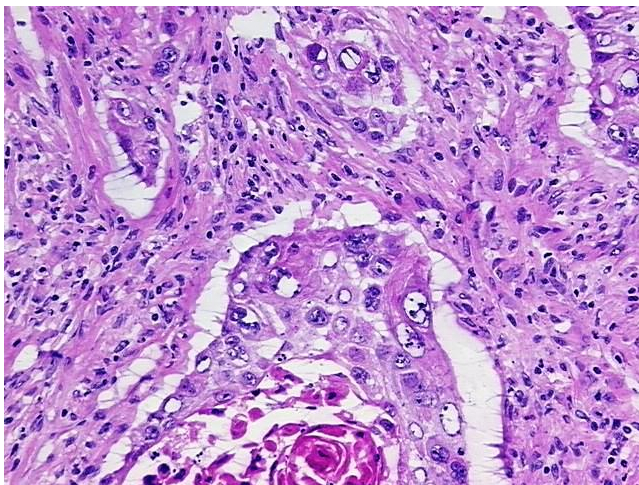


[View online »](#)

Minimum Stage Grouping:	IIA
T (Extent of Primary Tumor):	pT3
N (Lymph node metastasis):	pNX
M (Distant metastasis):	pMX
Storage:	Store frozen tissue sections at -80°C.
Stability:	All frozen tissue sections are stable for 1 year from date of purchase if stored at -80°C without repeated freeze/thaws.

Product images:

4x Image



20x Image