

Product datasheet for CS602208

Frozen Tissue Sections, Brain

Product data:

Product Type:	Frozen Sections
Disease State:	Other Disease
Diagnosis Category:	Meningioma
Tissue:	Brain
Frozen Sample ID:	FR00001850
Case ID:	CU0000000630
Tissue of Origin:	Brain
Site of Finding:	Brain
Appearance:	T
Sample Diagnosis (from Pathology Verification):	Meningioma, benign
Normal:	0%
Lesional:	0%
Tumor:	50%
Tumor Hypo/Acellular Stroma:	35%
Tumor Hypercellular Stroma:	15%
Necrosis:	0%
CASE Diagnosis (from medical center path report):	Meningioma, benign
Age:	60
Gender:	Female
Tumor Grade:	WHO Grade I
Minimum Stage Grouping:	Not Reported



[View online »](#)

T (Extent of Primary Tumor): Not Reported

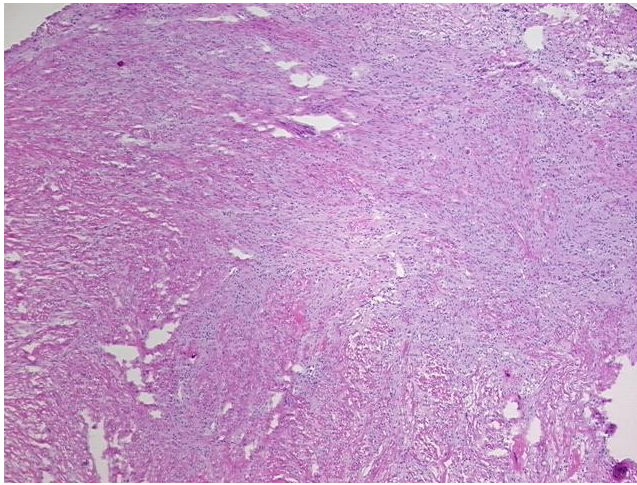
N (Lymph node metastasis): Not Reported

M (Distant metastasis): Not Reported

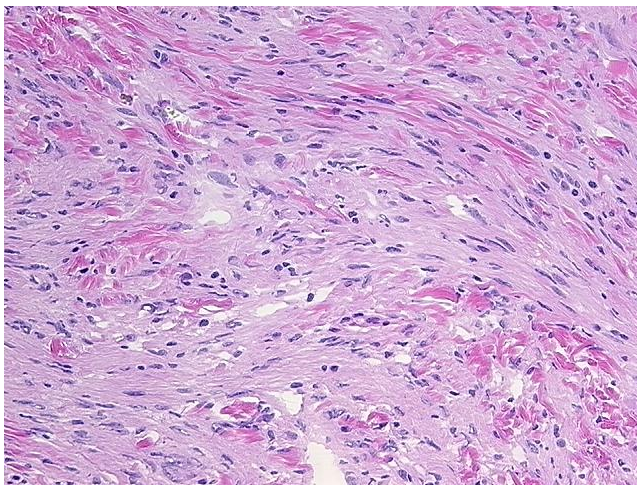
Storage: Store frozen tissue sections at -80°C.

Stability: All frozen tissue sections are stable for 1 year from date of purchase if stored at -80°C without repeated freeze/thaws.

Product images:



4x Image



20x Image