

## Product datasheet for **CS602098**

### Frozen Tissue Sections, Artery: peripheral

#### Product data:

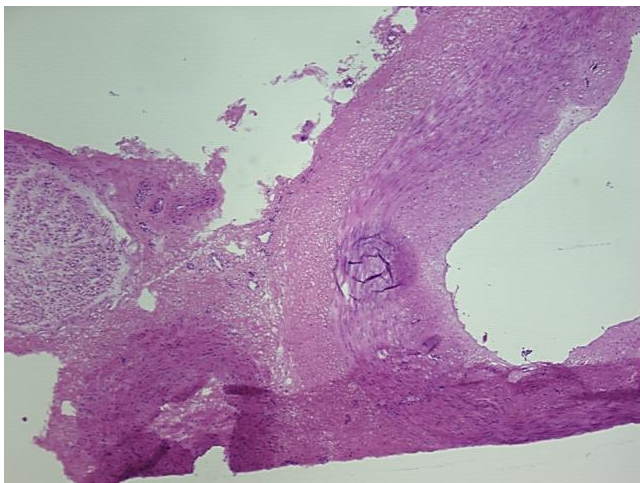
|   |   |
|---|---|
| Product Type:                                     | Frozen Sections   |
| Disease State:                                    | Other Disease   |
| Diagnosis Category:                               | Atherosclerosis   |
| Tissue:   | Artery  |
| Frozen Sample ID:                                 | FR0000176F  |
| Case ID:  | CU0000000619  |
| Tissue of Origin:                                 | Artery: peripheral  |
| Site of Finding:                                  | Artery: peripheral  |
| Appearance:                                       | L   |
| Sample Diagnosis (from Pathology Verification):   | Atherosclerotic plaque  |
| Normal:   | 20%   |
| Lesional:   | 80%   |
| Tumor:  | 0%  |
| Tumor Hypo/Acellular Stroma:                      | 0%  |
| Tumor Hypercellular Stroma:                       | 0%  |
| Necrosis:   | 0%  |
| Pathology Verification notes from H&E review:     | medium sized vessel with mild intimal thickening and smooth muscle cell proliferation consistent with early atherosclerosis; small nerve and normal vessel seen |
| CASE Diagnosis (from medical center path report): | Atherosclerosis   |
| Age:  | 71  |
| Gender:   | Male  |
| Storage:  | Store frozen tissue sections at -80°C.  |



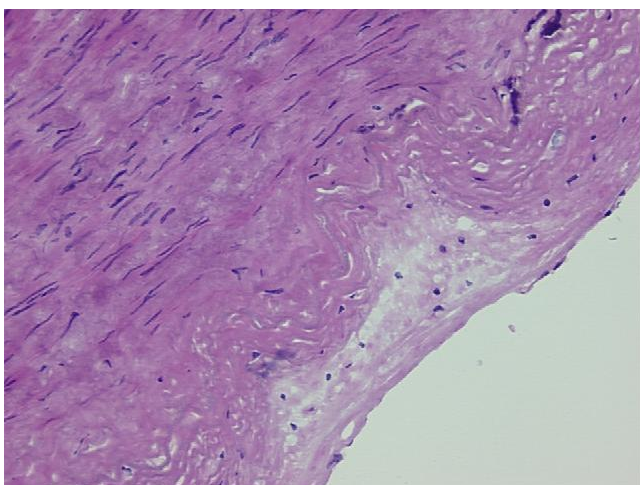
[View online »](#)

**Stability:** All frozen tissue sections are stable for 1 year from date of purchase if stored at -80°C without repeated freeze/thaws.

**Product images:**



4x Image



20x Image