

Product datasheet for CS602096

Frozen Tissue Sections, Artery: peripheral

Product data:

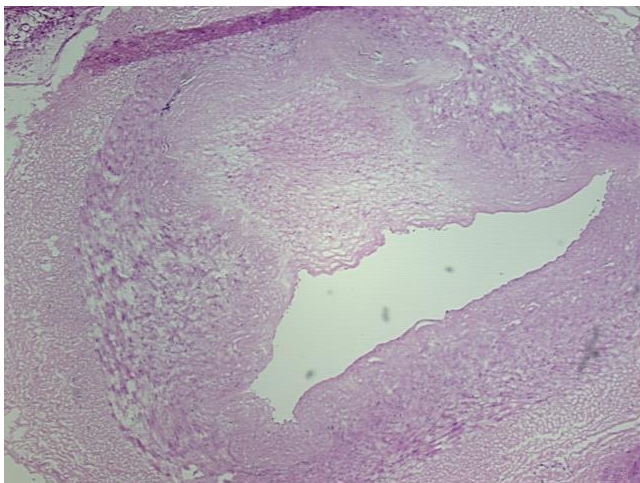
Product Type:	Frozen Sections
Disease State:	Other Disease
Diagnosis Category:	Atherosclerosis
Tissue:	Artery
Frozen Sample ID:	FR0000176D
Case ID:	CU0000000619
Tissue of Origin:	Artery: peripheral
Site of Finding:	Artery: peripheral
Appearance:	L
Sample Diagnosis (from Pathology Verification):	Atherosclerotic plaque
Normal:	20%
Lesional:	80%
Tumor:	0%
Tumor Hypo/Acellular Stroma:	0%
Tumor Hypercellular Stroma:	0%
Necrosis:	0%
Pathology Verification notes from H&E review:	medium sized vessel with mild intimal thickening and smooth muscle cell proliferation consistent with early atherosclerosis
CASE Diagnosis (from medical center path report):	Atherosclerosis
Age:	71
Gender:	Male
Storage:	Store frozen tissue sections at -80°C.



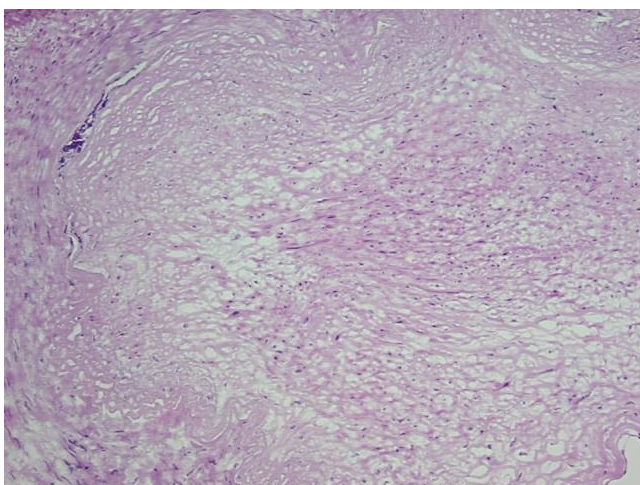
[View online »](#)

Stability: All frozen tissue sections are stable for 1 year from date of purchase if stored at -80°C without repeated freeze/thaws.

Product images:



4x Image



20x Image