

## Product datasheet for **CS602086**

### Frozen Tissue Sections, Small intestine

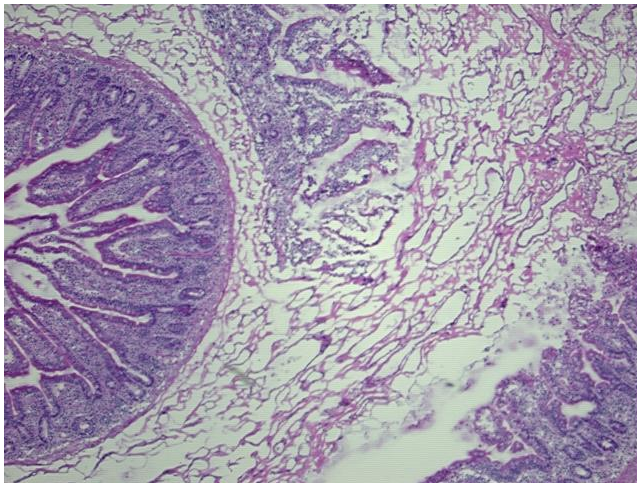
#### Product data:

<b>Product Type:</b>	Frozen Sections
<b>Disease State:</b>	Normal
<b>Diagnosis Category:</b>	Normal
<b>Tissue:</b>	Small intestine
<b>Frozen Sample ID:</b>	FR0000174D
<b>Case ID:</b>	CU0000000615
<b>Tissue of Origin:</b>	Small intestine
<b>Site of Finding:</b>	Small intestine
<b>Appearance:</b>	R
<b>Sample Diagnosis (from Pathology Verification):</b>	Within normal limits
<b>Normal:</b>	100%
<b>Lesional:</b>	0%
<b>Tumor:</b>	0%
<b>Tumor Hypo/Acellular Stroma:</b>	0%
<b>Tumor Hypercellular Stroma:</b>	0%
<b>Necrosis:</b>	0%
<b>Pathology Verification notes from H&amp;E review:</b>	30% Mucosa, 70% Submucosa and Muscle

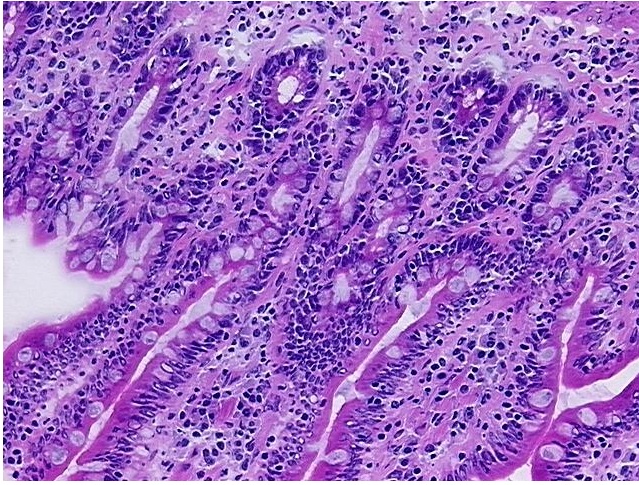


[View online »](#)

<b>CASE Diagnosis (from medical center path report):</b>	Gastrointestinal stromal tumor of small intestine
<b>Age:</b>	76
<b>Gender:</b>	Male
<b>Tumor Grade:</b>	Not Reported
<b>Minimum Stage Grouping:</b>	Not Reported
<b>T (Extent of Primary Tumor):</b>	Not Reported
<b>N (Lymph node metastasis):</b>	Not Reported
<b>M (Distant metastasis):</b>	Not Reported
<b>Storage:</b>	Store frozen tissue sections at $-80^{\circ}\text{C}$ .
<b>Stability:</b>	All frozen tissue sections are stable for 1 year from date of purchase if stored at $-80^{\circ}\text{C}$ without repeated freeze/thaws.

**Product images:**

4x Image



20x Image