

## Product datasheet for **CS601983**

### Frozen Tissue Sections, Liver

#### Product data:

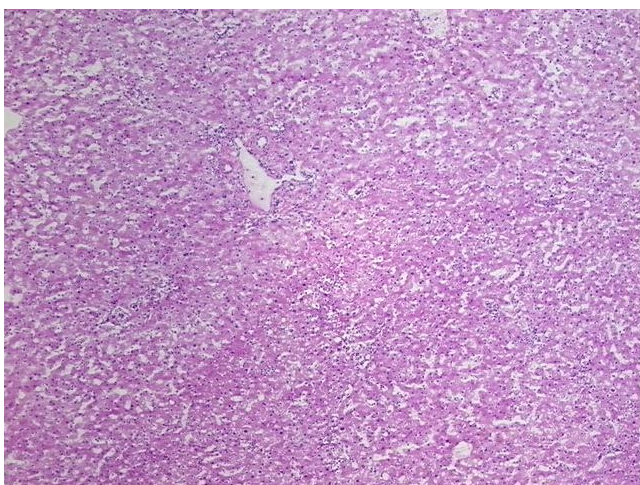
Product Type:	Frozen Sections
Disease State:	Normal
Diagnosis Category:	Normal
Tissue:	Liver
Frozen Sample ID:	FR00001683
Case ID:	CU0000000604
Tissue of Origin:	Liver
Site of Finding:	Liver
Appearance:	R
Sample Diagnosis (from Pathology Verification):	Within normal limits
Normal:	100%
Lesional:	0%
Tumor:	0%
Tumor Hypo/Acellular Stroma:	0%
Tumor Hypercellular Stroma:	0%
Necrosis:	0%
Pathology Verification notes from H&E review:	95% Lobules, 5% Portal triads; Contains focal inflammatory infiltrate
CASE Diagnosis (from medical center path report):	Carcinoma of liver, hepatocellular
Age:	81
Gender:	Male
Tumor Grade:	Not Reported



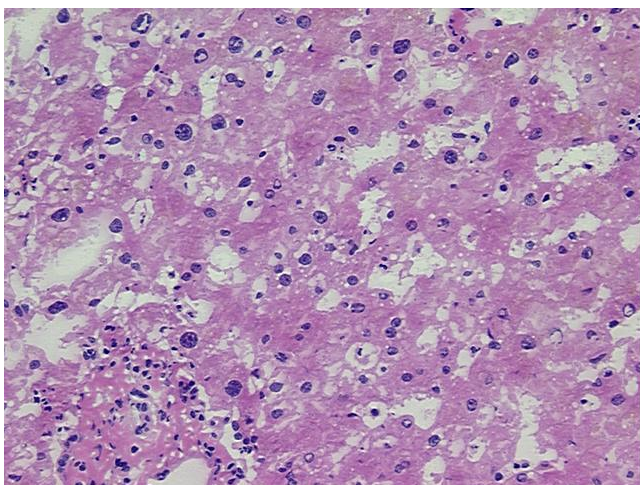
[View online »](#)

Minimum Stage Grouping:	IIIA
T (Extent of Primary Tumor):	T3
N (Lymph node metastasis):	NX
M (Distant metastasis):	MX
Diagnostic Test Results:	Cytokeratin CAM5.2 ~ CAM5.2 ! by IHC,Positive; Alpha-1-fetoprotein ~ AFP ! by IHC,Positive; CD66e ~ CEACAM5 ! by IHC,Positive; Cytokeratin AE1/AE3 ~ AE1/AE3 ! by IHC,Positive
Storage:	Store frozen tissue sections at -80°C.
Stability:	All frozen tissue sections are stable for 1 year from date of purchase if stored at -80°C without repeated freeze/thaws.

### Product images:



4x Image



20x Image