

## Product datasheet for CS601963

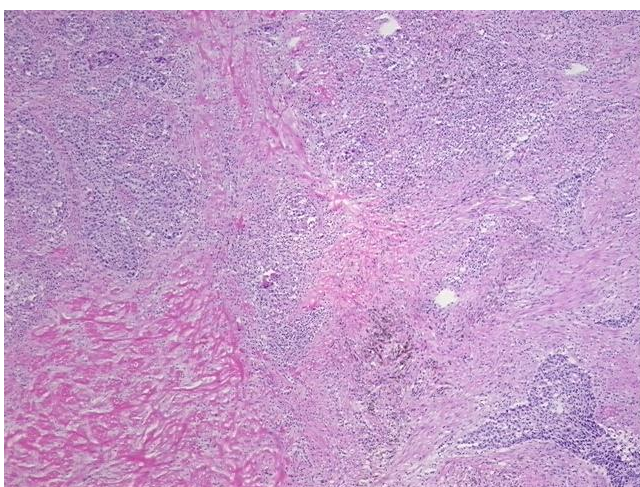
### Frozen Tissue Sections, Lung

#### Product data:

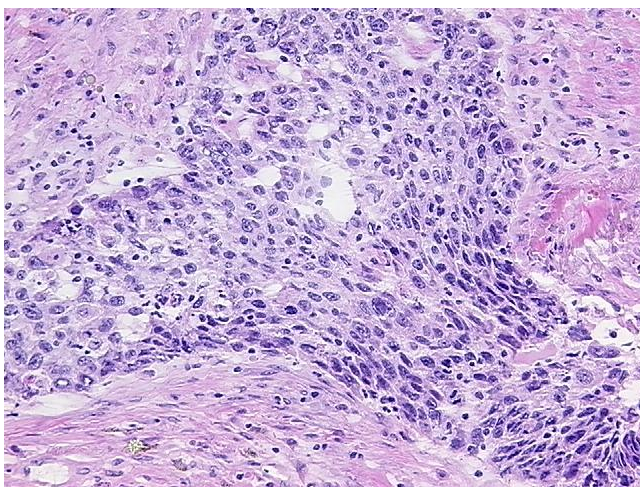
Product Type:	Frozen Sections
Disease State:	Cancer
Diagnosis Category:	Lung Cancer
Tissue:	Lung
Frozen Sample ID:	FR00001646
Case ID:	CU00000000602
Tissue of Origin:	Lung
Site of Finding:	Lung
Appearance:	T
Sample Diagnosis (from Pathology Verification):	Carcinoma of lung, squamous cell
Normal:	25%
Lesional:	0%
Tumor:	35%
Tumor Hypo/Acellular Stroma:	10%
Tumor Hypercellular Stroma:	25%
Necrosis:	5%
Pathology Verification notes from H&E review:	Intense polymorphonuclear and chronic inflammatory infiltrate present in tumor stroma
CASE Diagnosis (from medical center path report):	Carcinoma of lung, squamous cell
Age:	76
Gender:	Male
Tumor Grade:	AJCC G2: Moderately differentiated


[View online »](#)

Minimum Stage Grouping:	IIB
T (Extent of Primary Tumor):	T2
N (Lymph node metastasis):	N1
M (Distant metastasis):	MX
Storage:	Store frozen tissue sections at -80°C.
Stability:	All frozen tissue sections are stable for 1 year from date of purchase if stored at -80°C without repeated freeze/thaws.

**Product images:**


4x Image



20x Image