

## Product datasheet for **CS601938**

### Frozen Tissue Sections, Lung

#### Product data:

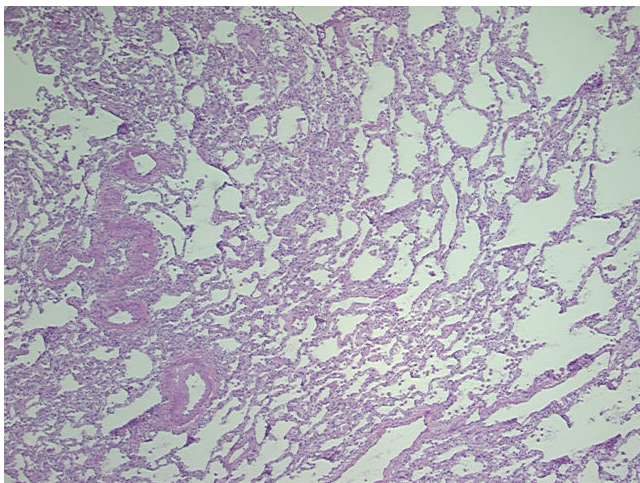
Product Type:	Frozen Sections
Disease State:	Other Disease
Diagnosis Category:	Infarction
Tissue:	Lung
Frozen Sample ID:	FR000015D3
Case ID:	CU00000000595
Tissue of Origin:	Lung
Site of Finding:	Lung
Appearance:	L
Sample Diagnosis (from Pathology Verification):	Infarction of lung, hemorrhagic
Normal:	0%
Lesional:	100%
Tumor:	0%
Tumor Hypo/Acellular Stroma:	0%
Tumor Hypercellular Stroma:	0%
Necrosis:	0%
Pathology Verification notes from H&E review:	90% Alveoli, 5% Bronchioles, 5% Focal fibrotic tissue; Contains intra-alveolar hemosiderin laden macrophages without necrotic tissue
CASE Diagnosis (from medical center path report):	Infarction of lung, hemorrhagic
Age:	36
Gender:	Male
Storage:	Store frozen tissue sections at -80°C.



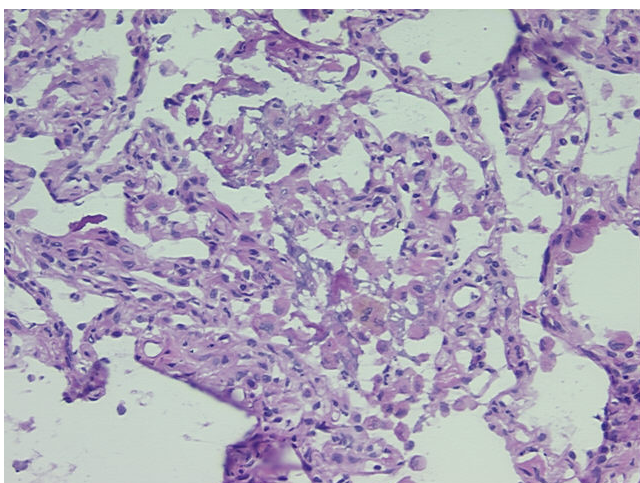
[View online »](#)

**Stability:** All frozen tissue sections are stable for 1 year from date of purchase if stored at -80°C without repeated freeze/thaws.

**Product images:**



4x Image



20x Image