

Product datasheet for **CS601886**

Frozen Tissue Sections, Endometrium

Product data:

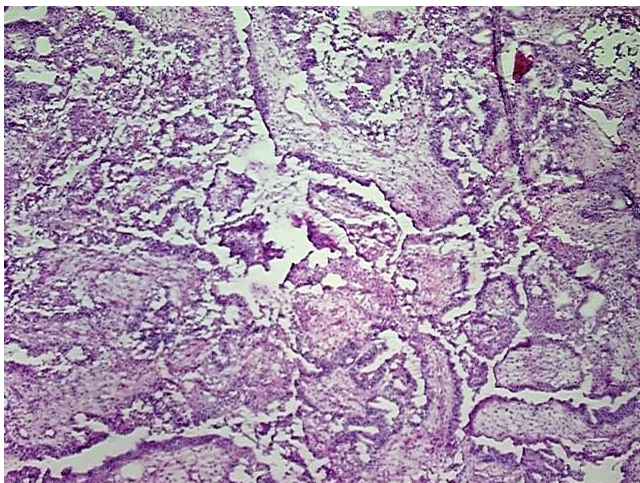
Product Type:	Frozen Sections
Disease State:	Other Disease
Diagnosis Category:	Hyperplasia
Tissue:	Endometrium
Frozen Sample ID:	FR00001563
Case ID:	CU0000000587
Tissue of Origin:	Endometrium
Site of Finding:	Endometrium
Appearance:	Lesion
Sample Diagnosis (from Pathology Verification):	Complex hyperplasia of the endometrium with atypia
Normal:	0%
Lesional:	90%
Tumor:	0%
Tumor Hypo/Acellular Stroma:	10%
Tumor Hypercellular Stroma:	0%
Necrosis:	0%
Pathology Verification notes from H&E review:	No tumor identified; Atypical complex hyperplasia with multifocal area of squamous metaplasia only
CASE Diagnosis (from medical center path report):	Adenocarcinoma of endometrium, endometrioid, squamous features
Age:	76
Gender:	Female
Storage:	Store frozen tissue sections at -80°C.



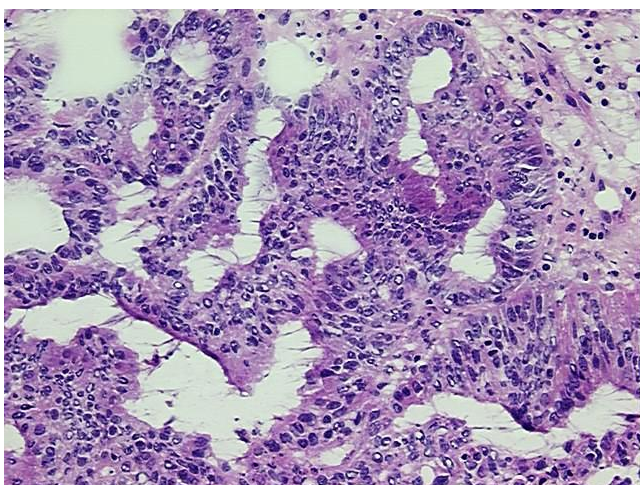
[View online »](#)

Stability: All frozen tissue sections are stable for 1 year from date of purchase if stored at -80°C without repeated freeze/thaws.

Product images:



4x Image



20x Image