

## Product datasheet for CS601724

### Frozen Tissue Sections, Liver

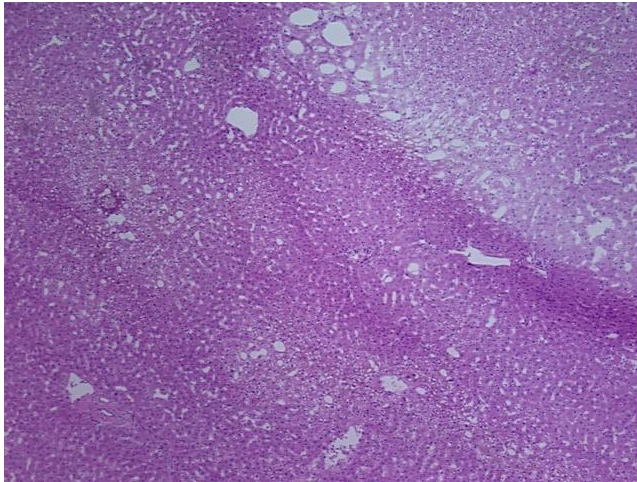
#### Product data:

Product Type:	Frozen Sections
Disease State:	Other Disease
Diagnosis Category:	Cirrhosis
Tissue:	Liver
Frozen Sample ID:	FR00001389
Case ID:	CU0000000543
Tissue of Origin:	Liver
Site of Finding:	Liver
Appearance:	L
Sample Diagnosis (from Pathology Verification):	Cirrhosis of liver
Normal:	0%
Lesional:	100%
Tumor:	0%
Tumor Hypo/Acellular Stroma:	0%
Tumor Hypercellular Stroma:	0%
Necrosis:	0%
Pathology Verification notes from H&E review:	95% Lobules, 5% Portal Triad; Established cirrhosis
CASE Diagnosis (from medical center path report):	Malignant melanoma, metastatic
Age:	56
Gender:	Male
Tumor Grade:	Not Reported

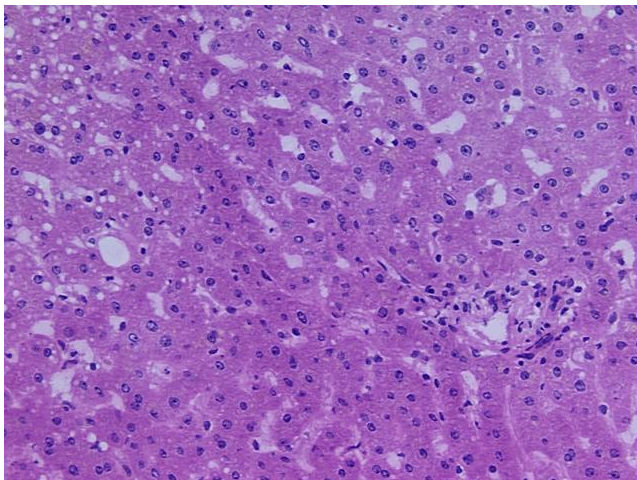


[View online »](#)

Minimum Stage Grouping:	IV
T (Extent of Primary Tumor):	TX
N (Lymph node metastasis):	NX
M (Distant metastasis):	M1c
Diagnostic Test Results:	HMB45 melanoma antigen ~ GP100 ! by IHC,Positive; S100 protein,Positive
Storage:	Store frozen tissue sections at -80°C.
Stability:	All frozen tissue sections are stable for 1 year from date of purchase if stored at -80°C without repeated freeze/thaws.

**Product images:**

4x Image



20x Image