

Product datasheet for **CS601662**

Frozen Tissue Sections, Myometrium

Product data:

Product Type:	Frozen Sections
Disease State:	Cancer
Diagnosis Category:	Endometrial Cancer
Tissue:	Myometrium
Frozen Sample ID:	FR0000130F
Case ID:	CU0000000533
Tissue of Origin:	Myometrium
Site of Finding:	Myometrium
Appearance:	Tumor
Sample Diagnosis (from Pathology Verification):	Adenocarcinoma of endometrium, serous
Normal:	79%
Lesional:	0%
Tumor:	15%
Tumor Hypo/Acellular Stroma:	0%
Tumor Hypercellular Stroma:	5%
Necrosis:	1%
CASE Diagnosis (from medical center path report):	Adenocarcinoma of endometrium, serous
Age:	66
Gender:	Female
Tumor Grade:	FIGO G3: Poorly differentiated
Minimum Stage Grouping:	IIIA



[View online »](#)

T (Extent of Primary Tumor): pT3a

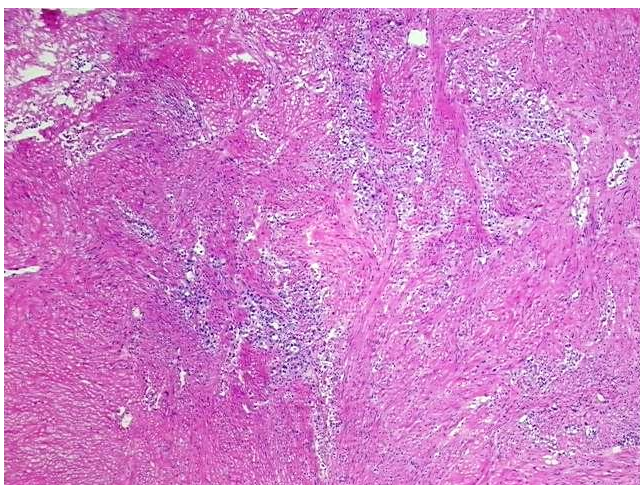
N (Lymph node metastasis): pNX

M (Distant metastasis): pMX

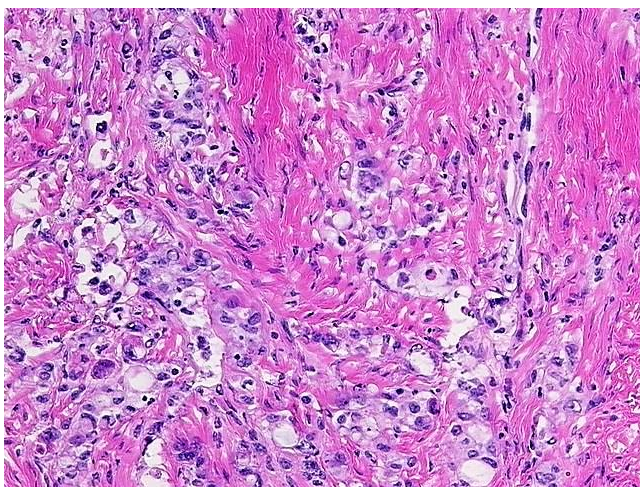
Storage: Store frozen tissue sections at -80°C.

Stability: All frozen tissue sections are stable for 1 year from date of purchase if stored at -80°C without repeated freeze/thaws.

Product images:



4x Image



20x Image