

Product datasheet for **CS601605**

Frozen Tissue Sections, Colon

Product data:

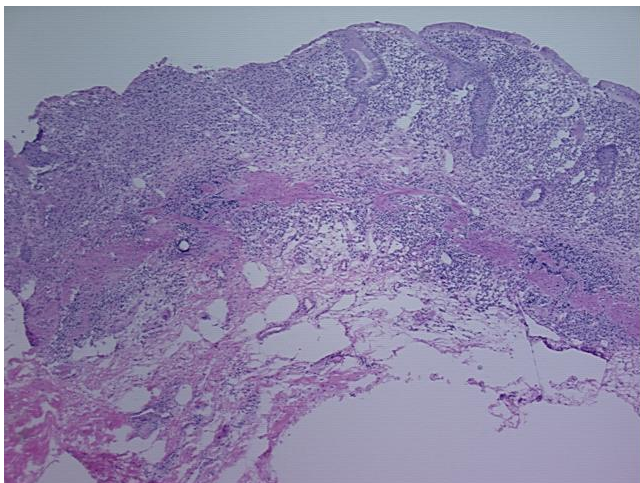
| | |
|---|--|
| Product Type: | Frozen Sections |
| Disease State: | Other Disease |
| Diagnosis Category: | Inflammatory Bowel Disease (IBD) |
| Tissue: | Colon |
| Frozen Sample ID: | FR0000129F |
| Case ID: | CU0000000521 |
| Tissue of Origin: | Colon |
| Site of Finding: | Colon |
| Appearance: | L |
| Sample Diagnosis (from Pathology Verification): | Colitis, chronic active |
| Normal: | 0% |
| Lesional: | 100% |
| Tumor: | 0% |
| Tumor Hypo/Acellular Stroma: | 0% |
| Tumor Hypercellular Stroma: | 0% |
| Necrosis: | 0% |
| Pathology Verification notes from H&E review: | 25% Mucosa, 75% Submucosa and Muscle; Active colitis with crypt abscesses; Multiple submucosal lymphoid aggregates |
| CASE Diagnosis (from medical center path report): | Colitis, active |
| Age: | 41 |
| Gender: | Male |
| Storage: | Store frozen tissue sections at -80°C. |



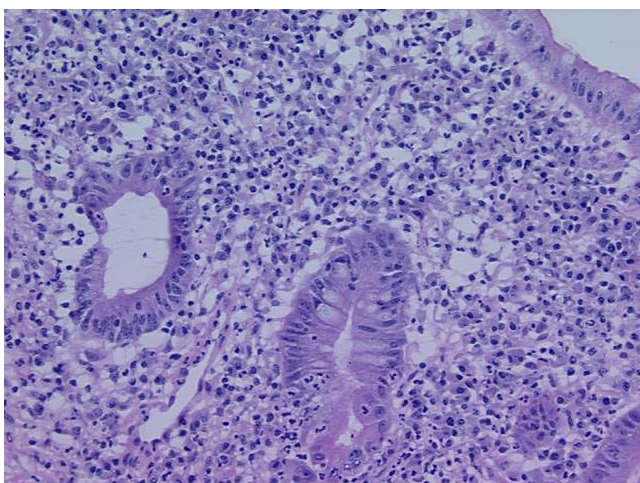
[View online »](#)

Stability: All frozen tissue sections are stable for 1 year from date of purchase if stored at -80°C without repeated freeze/thaws.

Product images:



4x Image



20x Image