

## Product datasheet for **CS601583**

### Frozen Tissue Sections, Fallopian tube

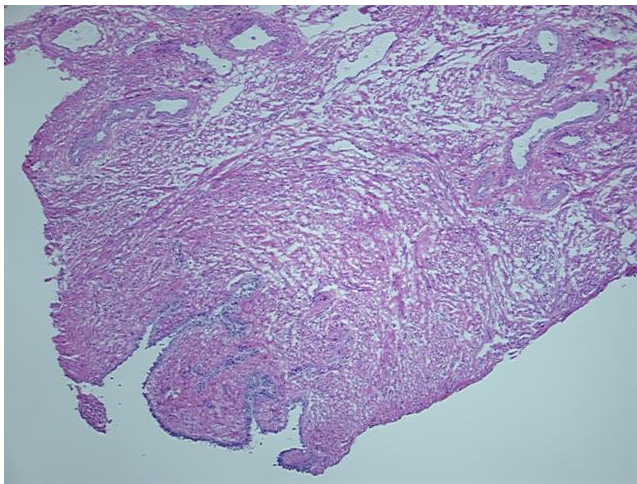
#### Product data:

|   |  |
|---|--|
| Product Type:                                     | Frozen Sections  |
| Disease State:                                    | Normal   |
| Diagnosis Category:                               | Normal   |
| Tissue:   | Fallopian tube   |
| Frozen Sample ID:                                 | FR0000127B   |
| Case ID:  | CU0000000515   |
| Tissue of Origin:                                 | Fallopian tube   |
| Site of Finding:                                  | Fallopian tube   |
| Appearance:                                       | R  |
| Sample Diagnosis (from Pathology Verification):   | Within normal limits   |
| Normal:   | 100%   |
| Lesional:   | 0%   |
| Tumor:  | 0%   |
| Tumor Hypo/Acellular Stroma:                      | 0%   |
| Tumor Hypercellular Stroma:                       | 0%   |
| Necrosis:   | 0%   |
| Pathology Verification notes from H&E review:     | 30% Mucosa, 70% Muscle; 25% cross section                      |
| CASE Diagnosis (from medical center path report): | Adenocarcinoma of endometrium, endometrioid, squamous features |
| Age:  | 61   |
| Gender:   | Female   |
| Tumor Grade:                                      | FIGO G1: Well differentiated                                   |

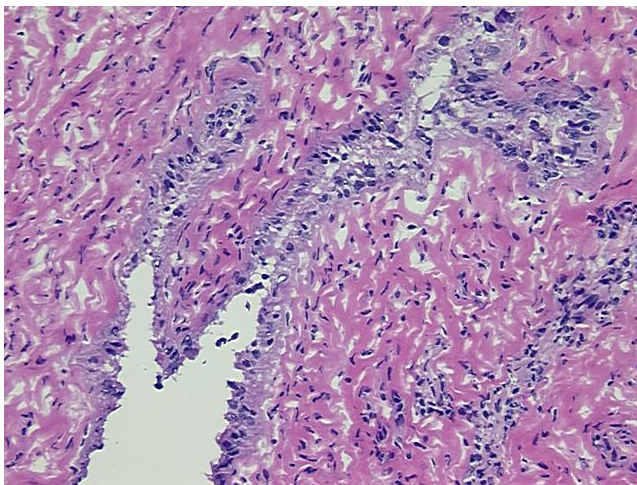


[View online »](#)

|                              |  |
|------------------------------|--|
| Minimum Stage Grouping:      | IIA  |
| T (Extent of Primary Tumor): | T2a  |
| N (Lymph node metastasis):   | N0   |
| M (Distant metastasis):      | MX   |
| Storage:                     | Store frozen tissue sections at -80°C.   |
| Stability:                   | All frozen tissue sections are stable for 1 year from date of purchase if stored at -80°C without repeated freeze/thaws. |

**Product images:**

4x Image



20x Image