

## Product datasheet for **CS601507**

### Frozen Tissue Sections, Liver

#### Product data:

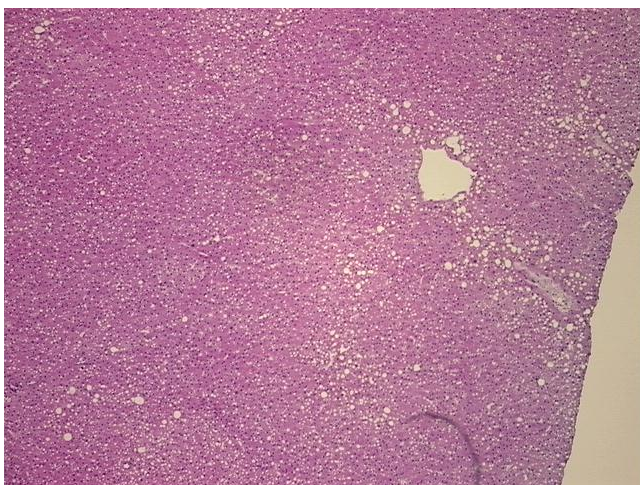
|   |  |
|---|--|
| Product Type:                                     | Frozen Sections                              |
| Disease State:                                    | Other Disease                                |
| Diagnosis Category:                               | Fatty Changes To Liver                       |
| Tissue:   | Liver  |
| Frozen Sample ID:                                 | FR000011D1                                   |
| Case ID:  | CU0000000503                                 |
| Tissue of Origin:                                 | Liver  |
| Site of Finding:                                  | Liver  |
| Appearance:                                       | L  |
| Sample Diagnosis (from Pathology Verification):   | Fatty changes to liver                       |
| Normal:   | 75%  |
| Lesional:   | 25%  |
| Tumor:  | 0%   |
| Tumor Hypo/Acellular Stroma:                      | 0%   |
| Tumor Hypercellular Stroma:                       | 0%   |
| Necrosis:   | 0%   |
| Pathology Verification notes from H&E review:     | Non Tumor Structures: 95% Lobules, 5% Triads |
| CASE Diagnosis (from medical center path report): | Hematoma                                     |
| Age:  | 61   |
| Gender:   | Female                                       |
| Storage:  | Store frozen tissue sections at -80°C.       |



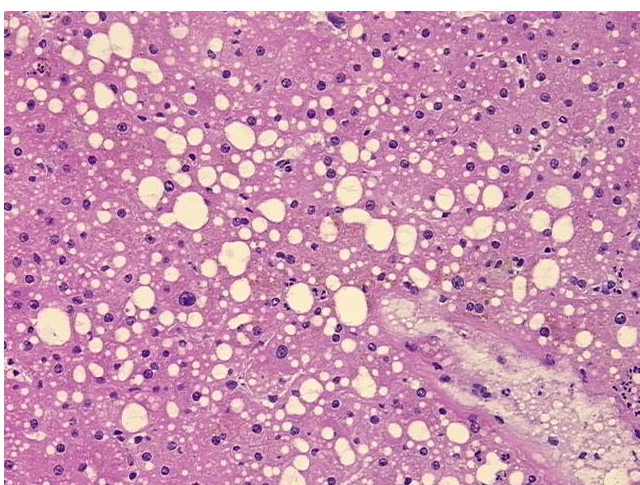
[View online »](#)

**Stability:** All frozen tissue sections are stable for 1 year from date of purchase if stored at -80°C without repeated freeze/thaws.

**Product images:**



4x Image



20x Image