

Product datasheet for **CS601483**

Frozen Tissue Sections, Lymphoid tissue

Product data:

Product Type:	Frozen Sections
Disease State:	Cancer
Diagnosis Category:	Lymphoma
Tissue:	Lymphoid tissue
Frozen Sample ID:	FR00001182
Case ID:	CU0000000496
Tissue of Origin:	Lymphoid tissue
Site of Finding:	Mediastinum
Appearance:	Tumor
Sample Diagnosis (from Pathology Verification):	Lymphoma, Hodgkin, nodular sclerosing
Normal:	0%
Lesional:	0%
Tumor:	25%
Tumor Hypo/Acellular Stroma:	25%
Tumor Hypercellular Stroma:	50%
Necrosis:	0%
Pathology Verification notes from H&E review:	Hypercellular stroma comprised of small lymphocytes, eosinophils, plasma cells and histiocytes; Numerous Reed Sternberg cells and variants
CASE Diagnosis (from medical center path report):	Lymphoma, Hodgkin, nodular sclerosing
Age:	34
Gender:	Male
Tumor Grade:	Not Reported



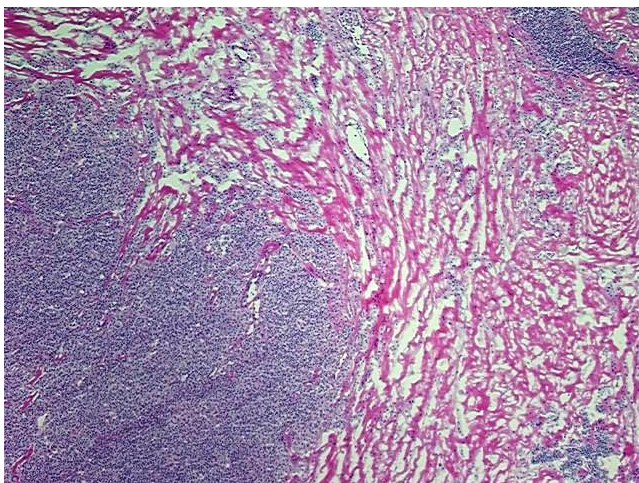
[View online »](#)

Minimum Stage |
Grouping:

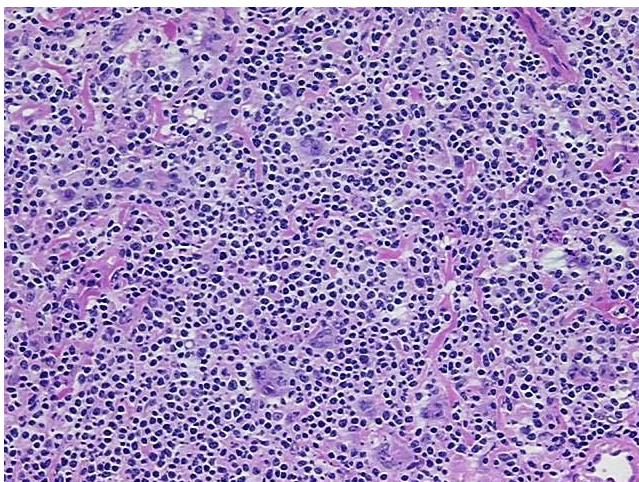
Storage: Store frozen tissue sections at -80°C.

Stability: All frozen tissue sections are stable for 1 year from date of purchase if stored at -80°C without repeated freeze/thaws.

Product images:



4x Image



20x Image