

Product datasheet for CS601221

Frozen Tissue Sections, Myometrium

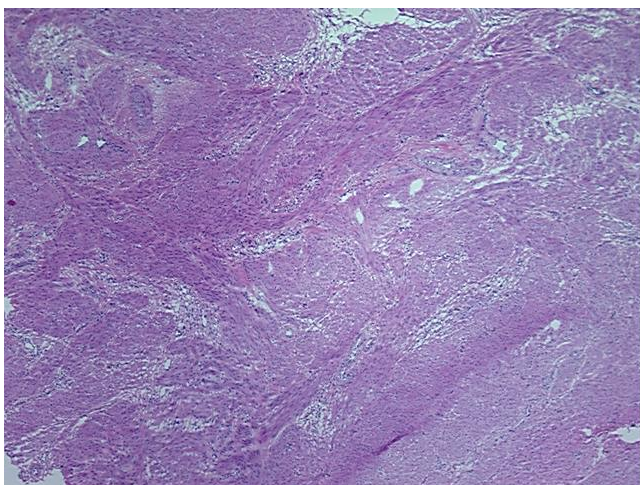
Product data:

Product Type:	Frozen Sections
Disease State:	Normal
Diagnosis Category:	Normal
Tissue:	Myometrium
Frozen Sample ID:	FR00000EFC
Case ID:	CU0000000425
Tissue of Origin:	Myometrium
Site of Finding:	Myometrium
Appearance:	R
Sample Diagnosis (from Pathology Verification):	Within normal limits
Normal:	100%
Lesional:	0%
Tumor:	0%
Tumor Hypo/Acellular Stroma:	0%
Tumor Hypercellular Stroma:	0%
Necrosis:	0%
CASE Diagnosis (from medical center path report):	Adenocarcinoma of colon
Age:	59
Gender:	Female
Tumor Grade:	AJCC G2: Moderately differentiated
Minimum Stage Grouping:	IIA

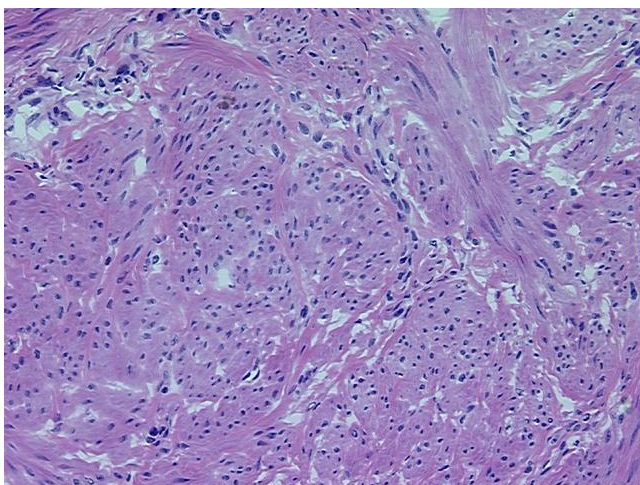


[View online »](#)

T (Extent of Primary Tumor):	T3
N (Lymph node metastasis):	N0
M (Distant metastasis):	MX
Storage:	Store frozen tissue sections at -80°C.
Stability:	All frozen tissue sections are stable for 1 year from date of purchase if stored at -80°C without repeated freeze/thaws.

Product images:

4x Image



20x Image