

## Product datasheet for **CS601186**

### Frozen Tissue Sections, Vas deferens

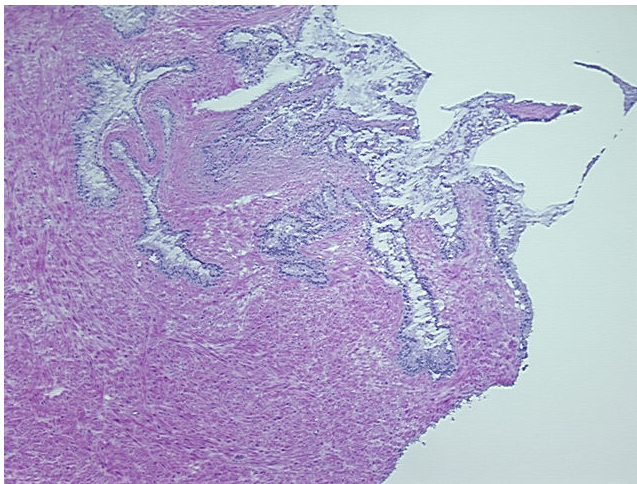
#### Product data:

Product Type:	Frozen Sections
Disease State:	Normal
Diagnosis Category:	Normal
Tissue:	Vas deferens
Frozen Sample ID:	FR00000EB5
Case ID:	CU0000000416
Tissue of Origin:	Vas deferens
Site of Finding:	Vas deferens
Appearance:	R
Sample Diagnosis (from Pathology Verification):	Within normal limits
Normal:	100%
Lesional:	0%
Tumor:	0%
Tumor Hypo/Acellular Stroma:	0%
Tumor Hypercellular Stroma:	0%
Necrosis:	0%
Pathology Verification notes from H&E review:	10% epithelium, 85% stroma and 5% nerve
CASE Diagnosis (from medical center path report):	Carcinoma of bladder, transitional cell
Age:	71
Gender:	Male
Tumor Grade:	AJCC G3: Poorly differentiated

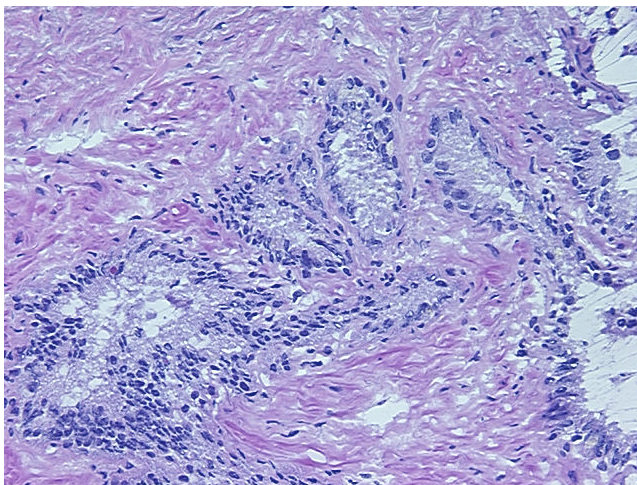


[View online »](#)

Minimum Stage Grouping:	II
T (Extent of Primary Tumor):	T2b
N (Lymph node metastasis):	NX
M (Distant metastasis):	MX
Storage:	Store frozen tissue sections at -80°C.
Stability:	All frozen tissue sections are stable for 1 year from date of purchase if stored at -80°C without repeated freeze/thaws.

**Product images:**

4x Image



20x Image