

## Product datasheet for **CS601126**

### Frozen Tissue Sections, Muscle tissue

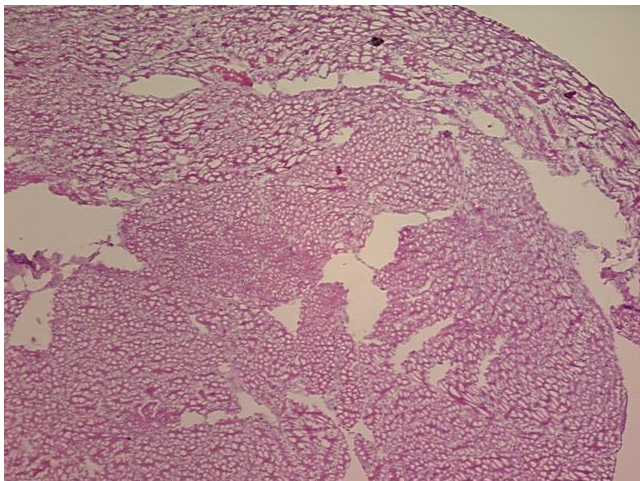
#### Product data:

Product Type:	Frozen Sections
Disease State:	Normal
Diagnosis Category:	Normal
Tissue:	Muscle tissue
Frozen Sample ID:	FR00000DFC
Case ID:	CU0000000394
Tissue of Origin:	Muscle tissue
Site of Finding:	Muscle tissue
Appearance:	R
Sample Diagnosis (from Pathology Verification):	Within normal limits
Normal:	100%
Lesional:	0%
Tumor:	0%
Tumor Hypo/Acellular Stroma:	0%
Tumor Hypercellular Stroma:	0%
Necrosis:	0%
CASE Diagnosis (from medical center path report):	Atherosclerosis
Age:	86
Gender:	Male
Storage:	Store frozen tissue sections at -80°C.
Stability:	All frozen tissue sections are stable for 1 year from date of purchase if stored at -80°C without repeated freeze/thaws.

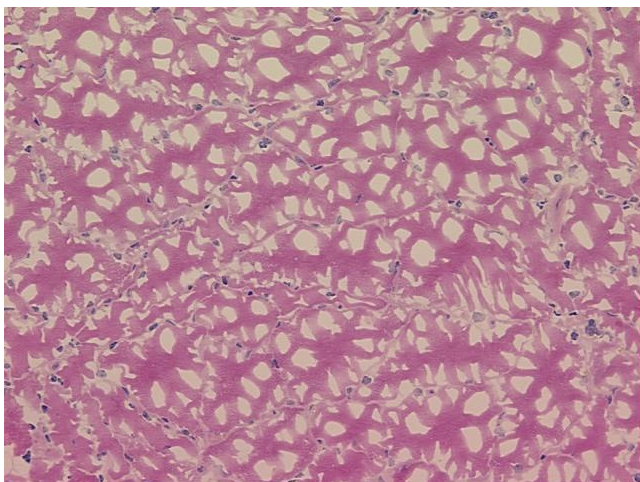


[View online »](#)

Product images:



4x Image



20x Image