

Product datasheet for **CS601039**

Frozen Tissue Sections, Colon

Product data:

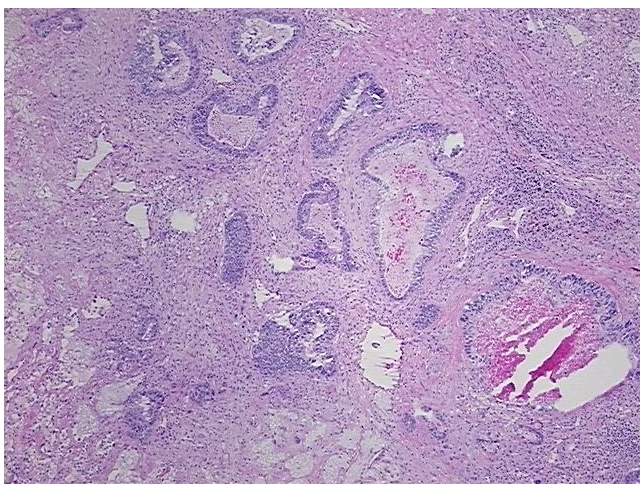
Product Type:	Frozen Sections
Disease State:	Cancer
Diagnosis Category:	Colorectal Cancer
Tissue:	Colon
Frozen Sample ID:	FR00000D26
Case ID:	CU00000000374
Tissue of Origin:	Colon
Site of Finding:	Lung
Appearance:	T
Sample Diagnosis (from Pathology Verification):	Adenocarcinoma, metastatic, consistent with colon primary
Normal:	0%
Lesional:	0%
Tumor:	25%
Tumor Hypo/Acellular Stroma:	0%
Tumor Hypercellular Stroma:	45%
Necrosis:	30%
Pathology Verification notes from H&E review:	Colon tumor metastasized to lung
CASE Diagnosis (from medical center path report):	Adenocarcinoma of colon, metastatic
Age:	71
Gender:	Male
Tumor Grade:	Not Reported



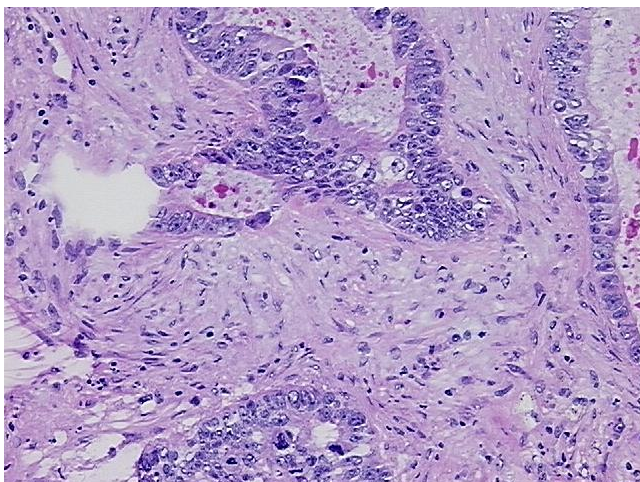
[View online »](#)

Minimum Stage Grouping:	IV
T (Extent of Primary Tumor):	TX
N (Lymph node metastasis):	NX
M (Distant metastasis):	M1
Diagnostic Test Results:	GMS ~ Grocott methenamine silver stain, Negative
Storage:	Store frozen tissue sections at -80°C.
Stability:	All frozen tissue sections are stable for 1 year from date of purchase if stored at -80°C without repeated freeze/thaws.

Product images:



4x Image



20x Image