

## Product datasheet for CS601032

### Frozen Tissue Sections, Spleen

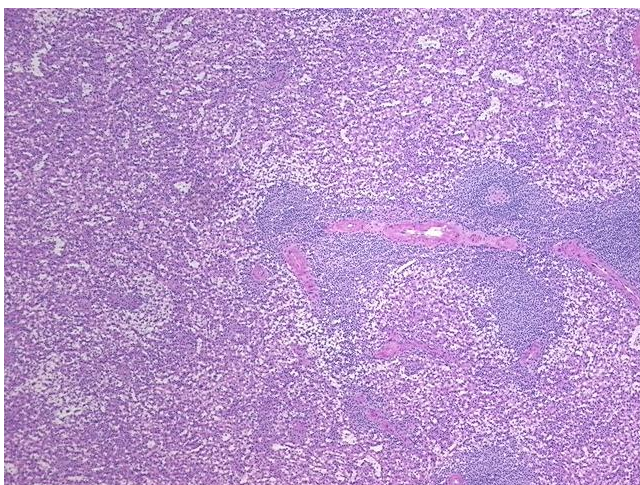
#### Product data:

Product Type:	Frozen Sections
Disease State:	Normal
Diagnosis Category:	Normal
Tissue:	Spleen
Frozen Sample ID:	FR00000D10
Case ID:	CU0000000371
Tissue of Origin:	Spleen
Site of Finding:	Spleen
Appearance:	R
Sample Diagnosis (from Pathology Verification):	Within normal limits
Normal:	100%
Lesional:	0%
Tumor:	0%
Tumor Hypo/Acellular Stroma:	0%
Tumor Hypercellular Stroma:	0%
Necrosis:	0%
Pathology Verification notes from H&E review:	70% Red pulp and 30% White pulp
CASE Diagnosis (from medical center path report):	Tumor of pancreas, neuroendocrine
Age:	41
Gender:	Male
Tumor Grade:	Not Reported



[View online »](#)

Minimum Stage Grouping:	Not Reported
T (Extent of Primary Tumor):	Not Reported
N (Lymph node metastasis):	Not Reported
M (Distant metastasis):	Not Reported
Storage:	Store frozen tissue sections at -80°C.
Stability:	All frozen tissue sections are stable for 1 year from date of purchase if stored at -80°C without repeated freeze/thaws.

**Product images:**

4x Image



20x Image