

## Product datasheet for CS600921

### Frozen Tissue Sections, Gallbladder

#### Product data:

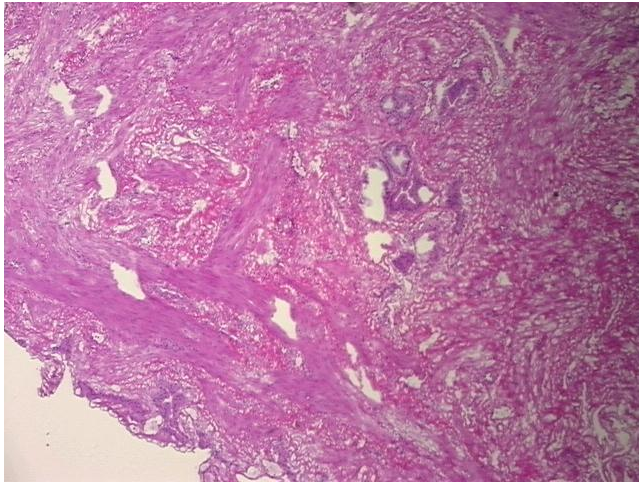
Product Type:	Frozen Sections
Disease State:	Other Disease
Diagnosis Category:	Gallbladder Disease
Tissue:	Gallbladder
Frozen Sample ID:	FR00000C4D
Case ID:	CU0000000345
Tissue of Origin:	Gallbladder
Site of Finding:	Gallbladder
Appearance:	L
Sample Diagnosis (from Pathology Verification):	Cholecystitis, chronic
Normal:	0%
Lesional:	100%
Tumor:	0%
Tumor Hypo/Acellular Stroma:	0%
Tumor Hypercellular Stroma:	0%
Necrosis:	0%
Pathology Verification notes from H&E review:	Non Tumor Structures: 5% Mucosa, 45% Muscle, 50% Adventitia
CASE Diagnosis (from medical center path report):	Graft rejection of liver
Age:	46
Gender:	Male
Storage:	Store frozen tissue sections at -80°C.



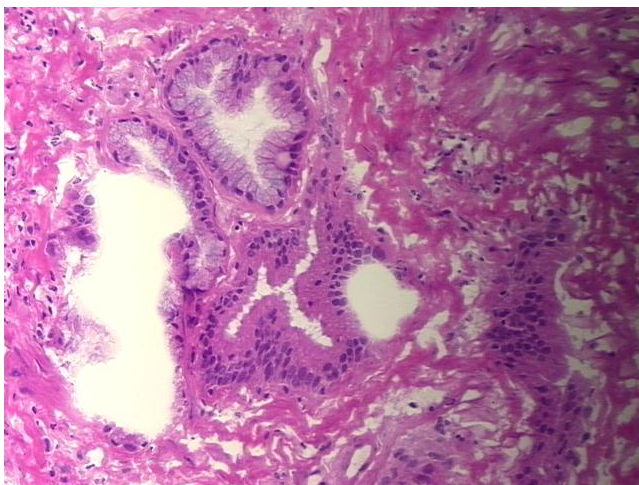
[View online »](#)

**Stability:** All frozen tissue sections are stable for 1 year from date of purchase if stored at -80°C without repeated freeze/thaws.

**Product images:**



4x Image



20x Image