

Product datasheet for **CS600904**

Frozen Tissue Sections, Fallopian tube

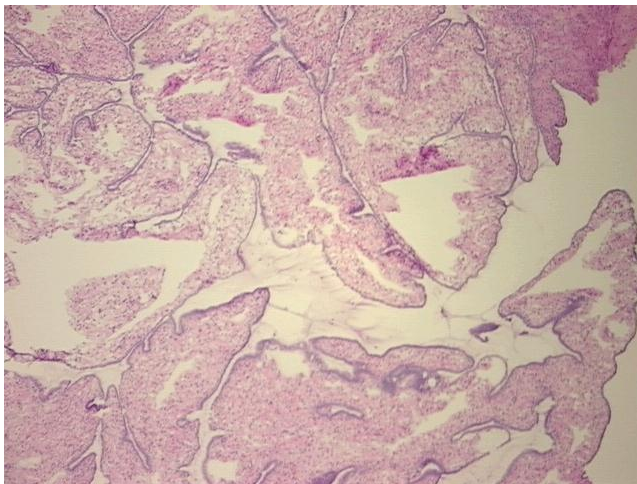
Product data:

Product Type:	Frozen Sections
Disease State:	Normal
Diagnosis Category:	Normal
Tissue:	Fallopian tube
Frozen Sample ID:	FR00000C13
Case ID:	CU0000000338
Tissue of Origin:	Fallopian tube
Site of Finding:	Fallopian tube
Appearance:	R
Sample Diagnosis (from Pathology Verification):	Within normal limits
Normal:	100%
Lesional:	0%
Tumor:	0%
Tumor Hypo/Acellular Stroma:	0%
Tumor Hypercellular Stroma:	0%
Necrosis:	0%
Pathology Verification notes from H&E review:	75% Fallopian tube cut in cross section with small serous epithelial component (10%), 25% Fibroadipose and vascular tissue consistent with tubal mesentary
CASE Diagnosis (from medical center path report):	Carcinoma of cervix, squamous cell, large cell, non-keratinizing
Age:	65
Gender:	Female
Tumor Grade:	Not Reported

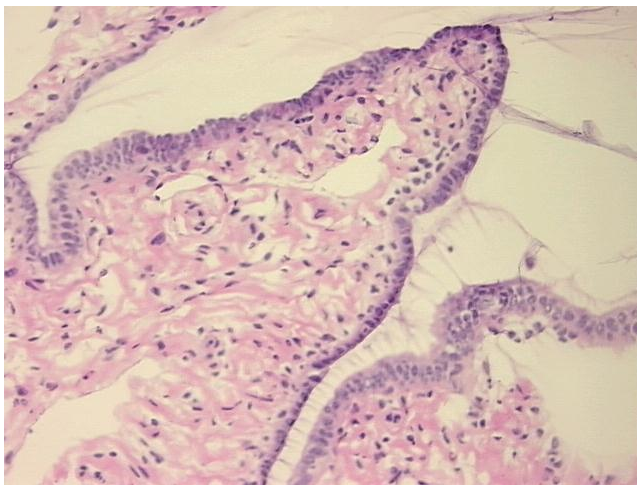


[View online »](#)

Minimum Stage Grouping:	IIB
T (Extent of Primary Tumor):	T2b
N (Lymph node metastasis):	N0
M (Distant metastasis):	MX
Storage:	Store frozen tissue sections at -80°C.
Stability:	All frozen tissue sections are stable for 1 year from date of purchase if stored at -80°C without repeated freeze/thaws.

Product images:

4x Image



20x Image