

Product datasheet for **CS600897**

Frozen Tissue Sections, Gallbladder

Product data:

Product Type:	Frozen Sections
Disease State:	Other Disease
Diagnosis Category:	Gallbladder Disease
Tissue:	Gallbladder
Frozen Sample ID:	FR00000BEA
Case ID:	CU0000000335
Tissue of Origin:	Gallbladder
Site of Finding:	Gallbladder
Appearance:	L
Sample Diagnosis (from Pathology Verification):	Cholecystitis, chronic
Normal:	80%
Lesional:	20%
Tumor:	0%
Tumor Hypo/Acellular Stroma:	0%
Tumor Hypercellular Stroma:	0%
Necrosis:	0%
Pathology Verification notes from H&E review:	Inflammation: Mild Mixed inflammatory infiltrate; Non Tumor Structures: 10% Mucosa, 90% Muscle
CASE Diagnosis (from medical center path report):	Adenocarcinoma of ampulla of Vater
Age:	71
Gender:	Female
Tumor Grade:	AJCC G2: Moderately differentiated



[View online »](#)

Minimum Stage Grouping: IIB

T (Extent of Primary Tumor): T3

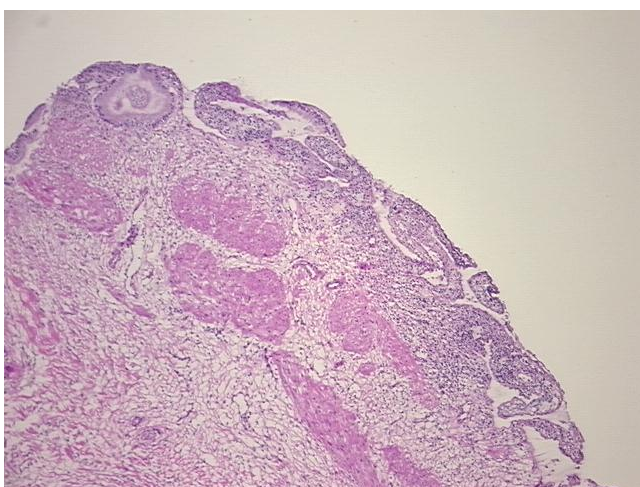
N (Lymph node metastasis): N0

M (Distant metastasis): MX

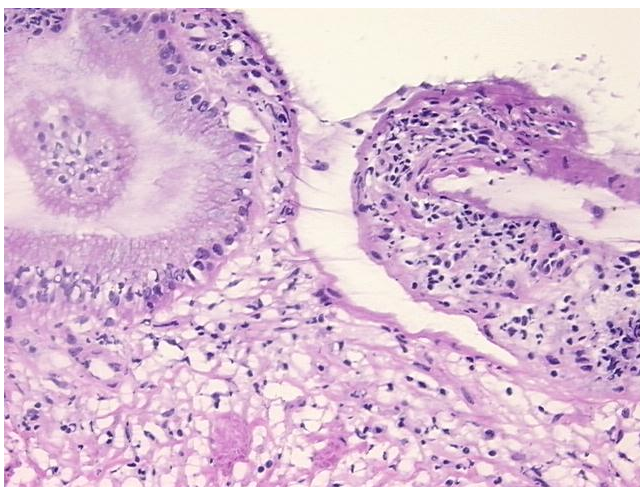
Storage: Store frozen tissue sections at -80°C.

Stability: All frozen tissue sections are stable for 1 year from date of purchase if stored at -80°C without repeated freeze/thaws.

Product images:



4x Image



20x Image