

Product datasheet for CS600819

Frozen Tissue Sections, Prostate

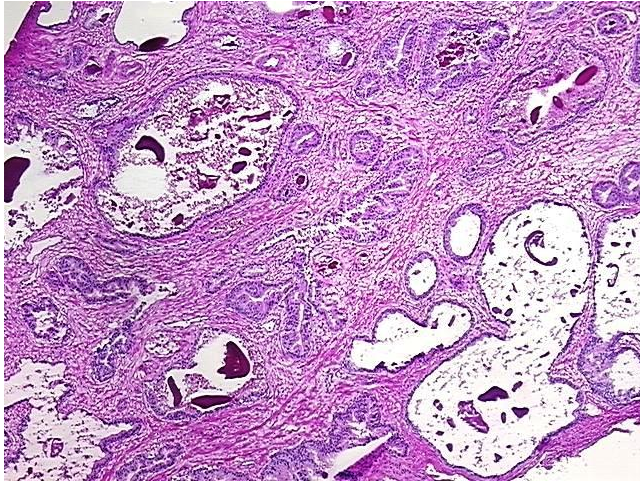
Product data:

Product Type:	Frozen Sections
Disease State:	Other Disease
Diagnosis Category:	Neoplasia
Tissue:	Prostate
Frozen Sample ID:	FR00000B02
Case ID:	CU0000000306
Tissue of Origin:	Prostate
Site of Finding:	Prostate
Appearance:	Lesion
Sample Diagnosis (from Pathology Verification):	Prostatic intraepithelial neoplasia
Normal:	40%
Lesional:	40%
Tumor:	0%
Tumor Hypo/Acellular Stroma:	0%
Tumor Hypercellular Stroma:	20%
Necrosis:	0%
CASE Diagnosis (from medical center path report):	Adenocarcinoma of prostate
Age:	65
Gender:	Male
Storage:	Store frozen tissue sections at -80°C.
Stability:	All frozen tissue sections are stable for 1 year from date of purchase if stored at -80°C without repeated freeze/thaws.

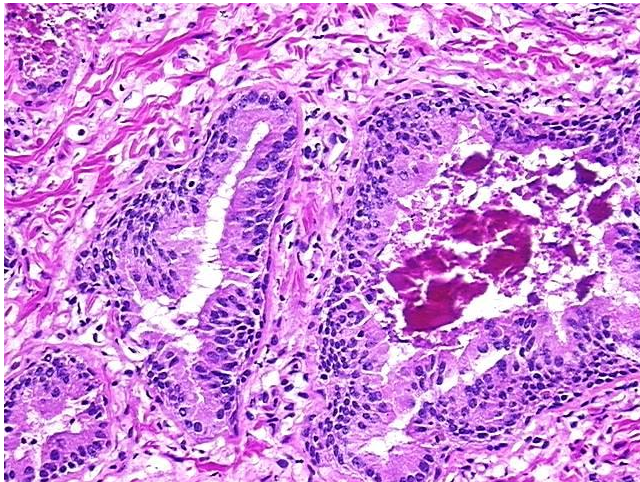


[View online »](#)

Product images:



4x Image



20x Image